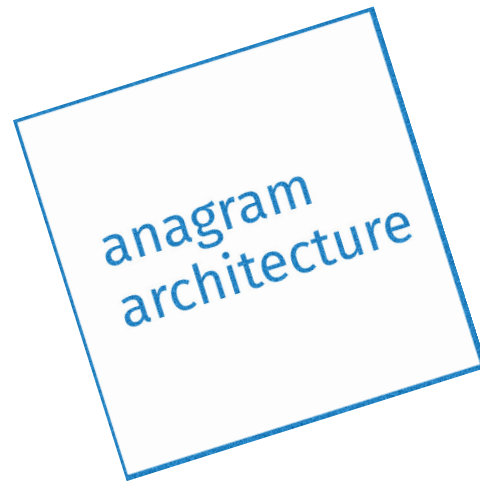


anagram architecture

selected works

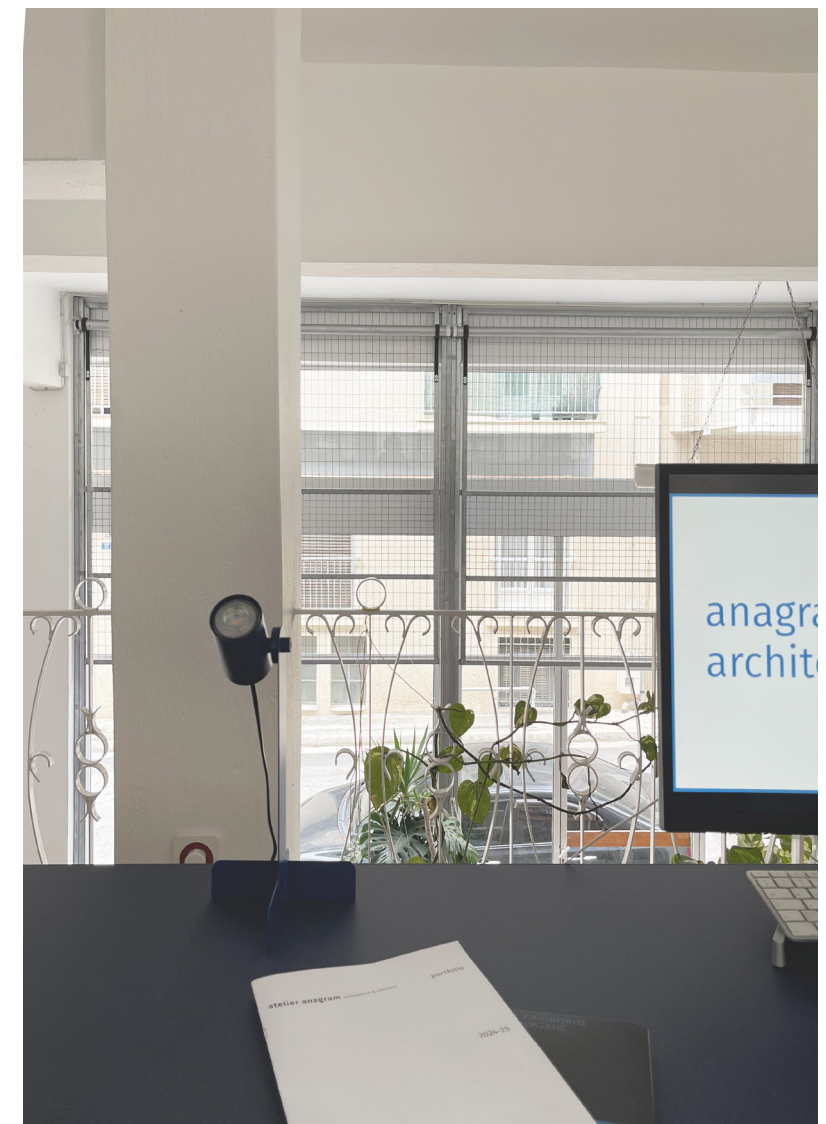
2024-25



anagram architects

Agiou Nikolaou 9
117 41 Athens Greece
t +30 6943497458
e hi@anagram-arch.com
w www.anagram-arch.com

anagram architects 2018-025. All rights reserved



about

ANAGRAM is an award-winning architectural practice that provides services from design through to construction. Established in Rotterdam in 2018 and currently based in Athens, the firm was founded by architect Marina Kounavi, who brings together a unique blend of academic and professional expertise from both Greece and the Netherlands. ANAGRAM's work is driven by a deep exploration of transforming existing typologies and spatial characteristics. The practice draws inspiration from the concept of anagrams, where the reshuffling of letters forms new meanings—similar to how the firm reinterprets historical references, architectural conventions, and existing qualities, creating novel spatial experiences that challenge conventional perceptions. With a multidisciplinary approach, ANAGRAM seamlessly integrates high-end architectural design, interior design, and the renovation of spaces. The firm's diverse portfolio spans residential, civic, and refurbishment projects of varying scales. ANAGRAM possesses specialized expertise in concept design, building technology, architectural detailing, and navigating Greek regulations. The practice has gained recognition in both national and international competitions, including notable achievements such as being shortlisted for the Bauhaus Museum in Dessau, winning first prize for the Varna Regional Library (currently under construction), and receiving second prize for the Souda Passenger Terminal. Other prestigious awards include a first prize for Social Housing in Larnaca (under construction), a special mention for the Ioannina Cultural Park, and a first prize for the TGM16 competition (under construction). Currently, ANAGRAM is overseeing the construction of a 32-unit residential project in Larnaca (5,000 m²) and the refurbishment of the town hall in Prerov (5,000 m²).



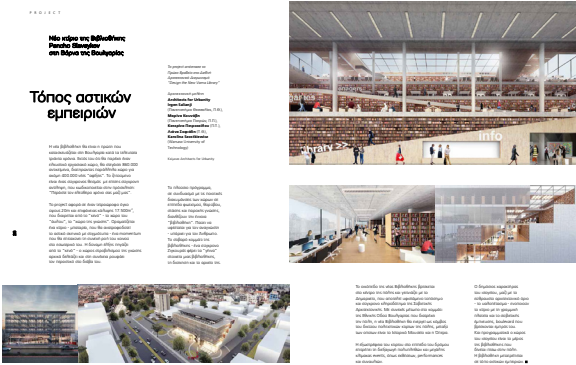
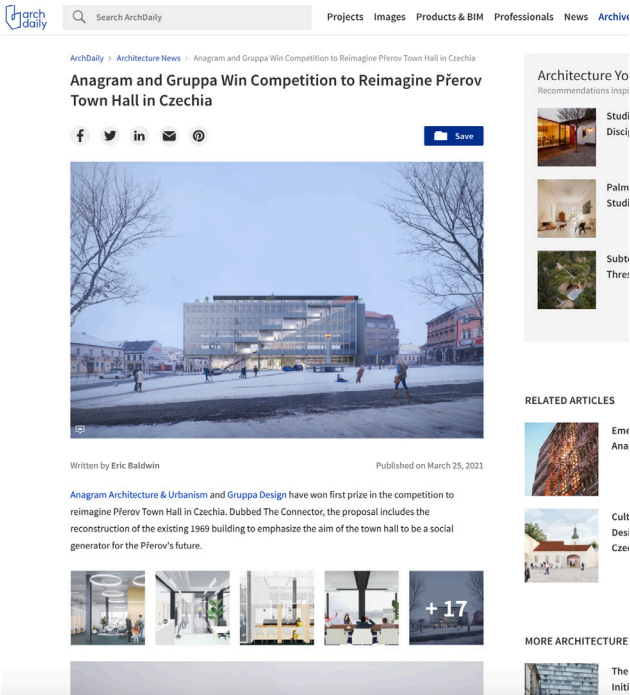
the studio



Marina Kounavi was born in Patras, Greece in 1988. She holds a Diploma in Architecture Engineering from the University of Patras (2010) and a Master of Science in Architecture and Urbanism from TU Delft (2012). Currently she is based in Athens. She spent a decade working in leading architectural firms in the Netherlands, including OMA/Rem Koolhaas, MVRDV, and Mecanoo. She has contributed to various project phases, from concept to interior design. Her key projects include the Axel Springer Headquarters in Berlin (OMA), the headquarters of Belgium's national rail company (OMA), the European Investment Bank in Luxembourg (Mecanoo), and residential projects in Amsterdam and San Francisco (MVRDV). She is a design tutor at Metropolitan College in Athens, in collaboration with Oxford Brookes University (UK), and a registered architect in both the Netherlands and Greece.

Current / Previous Collaborators

Konstantina Lola, Simos Makaronas, Liana Sofadi, Noa Architects, Alex Minchev, Atelier gram, Jan Kudlicka, Anne-Sereine Tremblay, Architects for urbanity, Irgen Salianji, Karolina Szóstkiewicz, Katerina Petrocheilou, Nikos Koukoulas, Antonis Laurijsen, Fouad Addou, Maria Akrivou, Marilena Kasimidi, Harris Vamvakas.



selected works

2024 - 32 Housing Units Larnaca Cyprus
2024 - TGM16 Refurbishment of the Townhall of Přerov Czechia
2022 - Nursery School of Cholargos
2021 - D. Daskalopoulos Art Building
2017 - Passenger Terminal of Souda
2015 - Varna Regional Library



32 housing units

1st prize, under construction

Larnaca CY, 2024
5000 m²

Inspired by the informal settlements and micro-scale typologies that exist in villages, we propose a fragmented volume that redefines the initial scale of collective housing. The porous housing block provides great visual connections and allows some breaks in a high footprint occupancy environment.

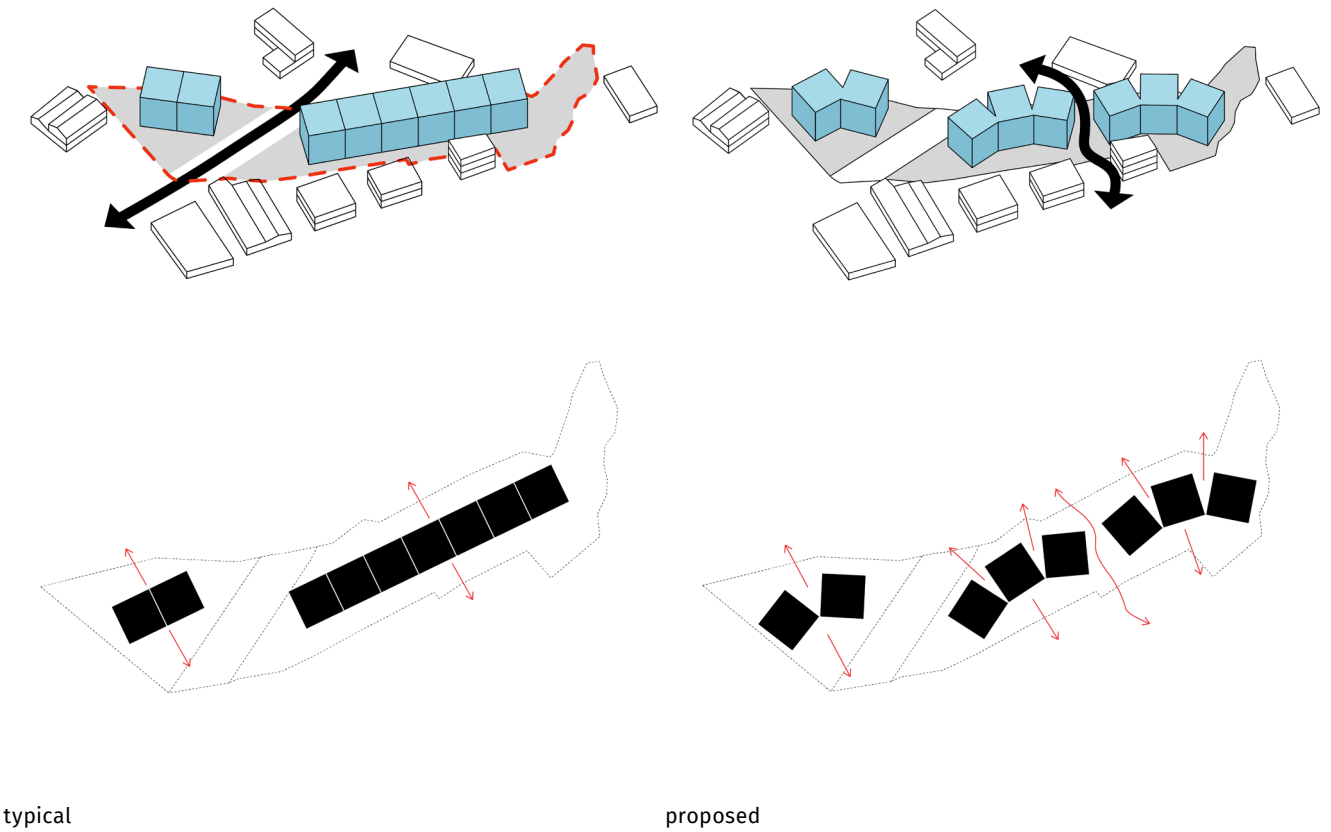
By rotating the 4-storeys residential blocks, all rooms of the apartments have an opening, maximising views to the close landscape and guaranteeing both natural light and ventilation. Balconies are implemented as extension of the interior spaces in the corners of every residential unit. The cubes stand on a continuous slab that accommodates a common yard for the inhabitants.



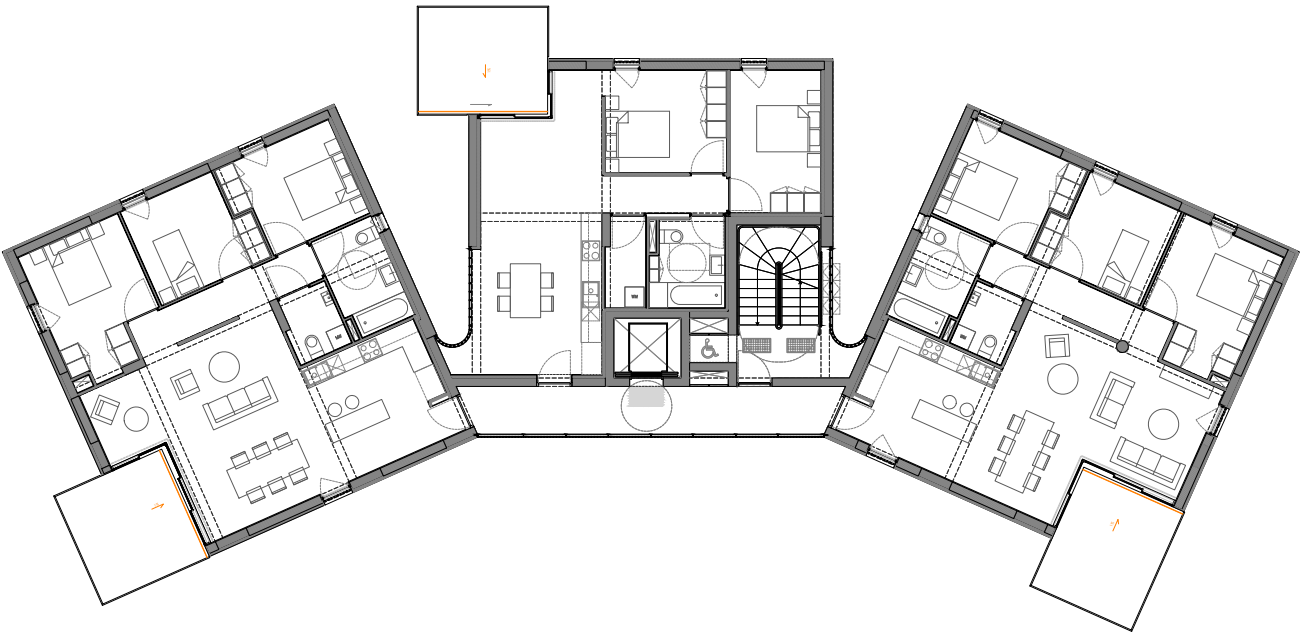




the urban blocks create spaces in-between activating in that way the ground floor and produce a common public space for the users.



What are the requirements of a contemporary apartment?



typical floorplan

the living room



the kitchen



The interior layout aims to increasing the flexibility of the common spaces in the apartments and the clear separation between common/ private zones.

reconstruction of Prerov townhall

1st prize, under construction

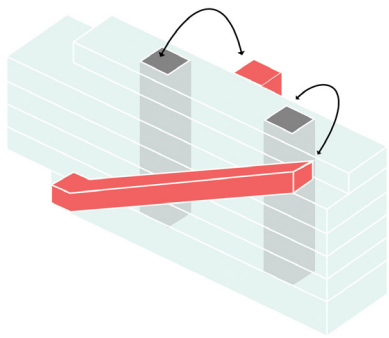
Prerov CZ, 2021
5 000 m²

The brief requests the reconstruction of the Town Hall of Prerov, a building which dates back to 1969. How to remake the building a liveable entity, and set up a social generator between the public and the town hall administration? The lowest floors accommodate the majority of the meeting spaces between citizens and administration officers. By implementing the Connector - main staircase attached to the facade -, the communication between the different departments becomes visible and fathomable by the users. Exhibitions areas for visitors or informal meeting for employees can take place in the new volume of the staircase. A public route is created through the building, leading to the rooftop where the visitor can enjoy the terrace of the cafe and the panoramic view to the city.

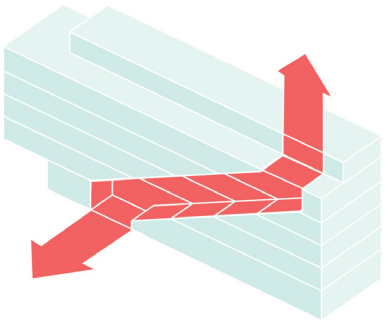




MAIN GOALS
The three main goals of the proposed approach are to solve the problem of fire escape without reducing the office space, to overcome the sunlight of the southern facade and to give a human scale to the building, which is currently out of balance with the existing urban context. The staircase creates a new identity for the building and the city of Prerov.



Fire safety solutions and minimization of the impact on the office space



breaking the monumentality of the building and offering a new identity for the Town Hall

STAIRCASE PROGRAMMATIC CHARACTER
The classical vertical circulation core, which is often a narrow space without access to daylight in the middle of the building, is designed and placed in the most visible place of the town hall, on the facade that directly communicates with the historical TGM square. The newly created space is not only understood as a means of communication between floors, but as a multifunctional flexible space for social, cultural and even sports activities.



The existing structure remains in place – a systematic grid of columns and beams which delivers flexibility and efficiency in the layout of office spaces. Most of the vertical circulation and partition walls are demolished to free up entirely a series of plateaux. A mesh facade contributes to offer a new identity for the Town Hall of Prerov while respecting the bold character of the building.

How to transform a building into a living entity and create social generator among the public and the town hall office building?



cafe



entrance

Most of the meeting spaces for citizens and government officials are located on the lowest floors. By implementing the „connector“ - the main staircase connected to the facade - communication between individual departments becomes visible and understandable for users. The new staircase volume can host exhibitions for visitors or informal staff meetings. This creates a public path through the building that leads to the roof, where the visitor can enjoy a panoramic view of the city and the cafe terrace.



stair



entrance

nursery school in Cholargos

special mention in domes awards in 2024

Athens GR, 2023
7 800 m²

The proposal covers the study of a new building of nursery for the community of Papagos-Holargos. The building has a character of public building, its programmatic nature led us to make the basic design decisions. The key question for us was: "what kind of building we want as the first after home for our children to enter?"

With the above as guidelines, a flexible building is proposed for the future needs of the nursery which mass creates outdoor and semi-outdoor spaces where all rooms can be spaced out. The design of the nursery is based on spatial and visual contact with the greenery in continuous space. Our goal is to cultivate a relationship between

toddlers and nature. Nature also plays a great role for a teacher that teaches the children every day. The connection is achieved by the retreats of the volumes per floor creating a „mountain“ or pyramid of knowledge and learning.

The façade is organised with a series of semi-open spaces, they serve to shade the building thus improving its energy efficiency but also create a sheltered environment as a transition or "doorstep" between the garden and the hall to be used by users on rainy or hot days. The proposed design of these semi-open spaces is influenced by the neighbourhood of Papagos-Holargos and the typology of some modernist apartment





semi-open space

The proposed circulation is positioned to free the floor plan from stairwells or lifts and as a result make the interior spaces more flexible. It also provides independent access to both infant and toddler levels for both children, parents and staff. An element that makes access more controllable for staff and makes the building flexible to future budgetary challenges such as that of COVID-19.



typical classroom



D. Daskalopoulos art building

Athens GR, 2022
5 000 m²

The plot of D. Daskalopoulos Arts Building is located in the heart of the Campus of Athens College. Instead of an iconic imposition, we propose a link between the urban entrance and the sport fields with the picturesque green park — a link between urbanity and nature through culture. The circulation zone is positioned in the urban side offering a unique view of all the workshops to the forest. The D. Daskalopoulos Arts Building will function

as a contemporary building devoted to arts and the aim is to be positioned in the map of the art institutions around the world which is achieved through the contemporary character of architecture and the materiality. Moreover, the exhibition hall is a square space of 7 m height which could accommodate any kind of exhibition layout and give freedom to curators.

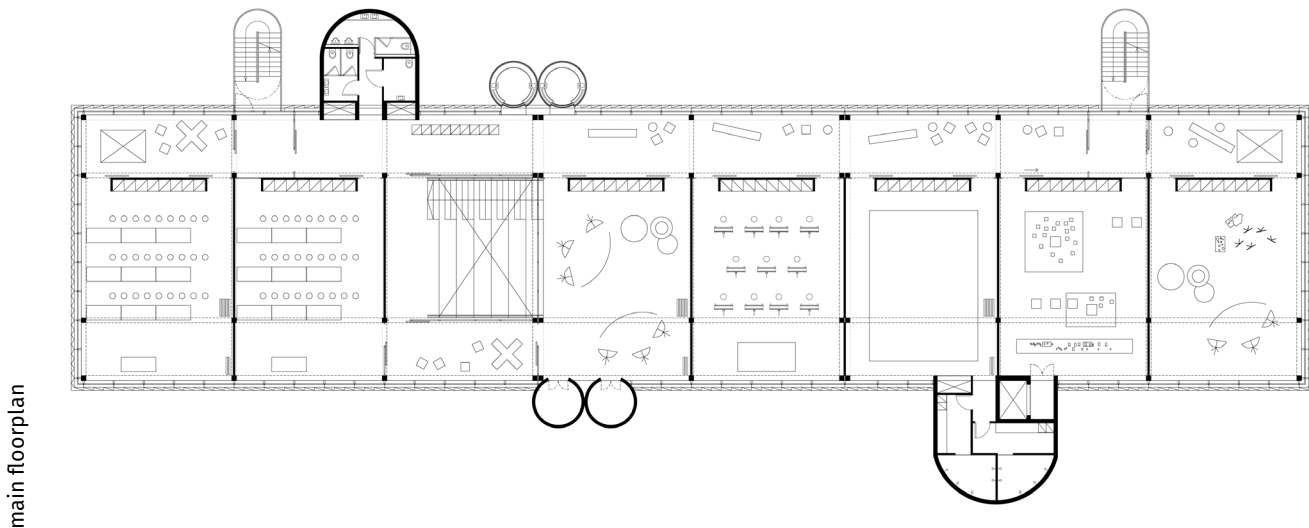
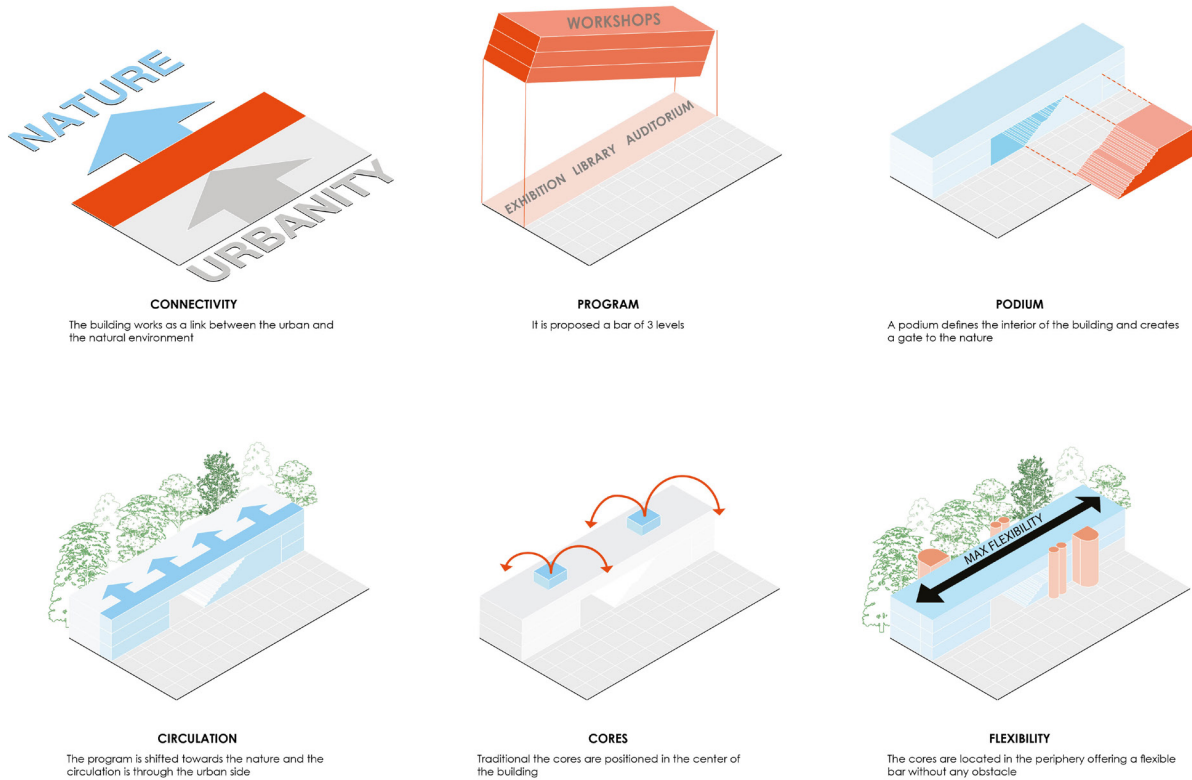




The proportions of the proposed building and the position of the circulation cores in the periphery allows the maximum independence of the different programs. The exhibition, the library, the auditorium, the workshops and the parking can work simultaneously but also, independently with different access. The composition results in a building which can function 24 h independently without deteriorating the privacy of the different functions.

The trends and the means are constantly changing with a rapid rhythm. The proposal targets to achieve the maximum flexibility in order to be always possible to adapt the building and meet the demands. Environmental spatial resilience are the key points in terms of architectural and engineering solutions.

Key point of the design is to offer an environment which users will feel familiar with and be able to inhabit it.



passenger terminal of Souda

2nd prize

Crete GR, 2017
9 000 m²

The development of the new Passenger Terminal of Souda will contribute to the future development of the port and provide a high quality service to the continuously increasing number of visitors in Crete. Our proposal aims to achieve optimum functionality of the Terminal and create a landmark that is inspired by the morphological characteristics of the Cretan tradition and archaeology. The passenger terminal will be the first and the last building that visitors will come across during their arrival and departure from Crete. Therefore it is essential to provide a unique experience to the passengers and introduce them to the Cretan hospitality. The terminal will be the first element of interest to be seen by the arriving visitors as the ships

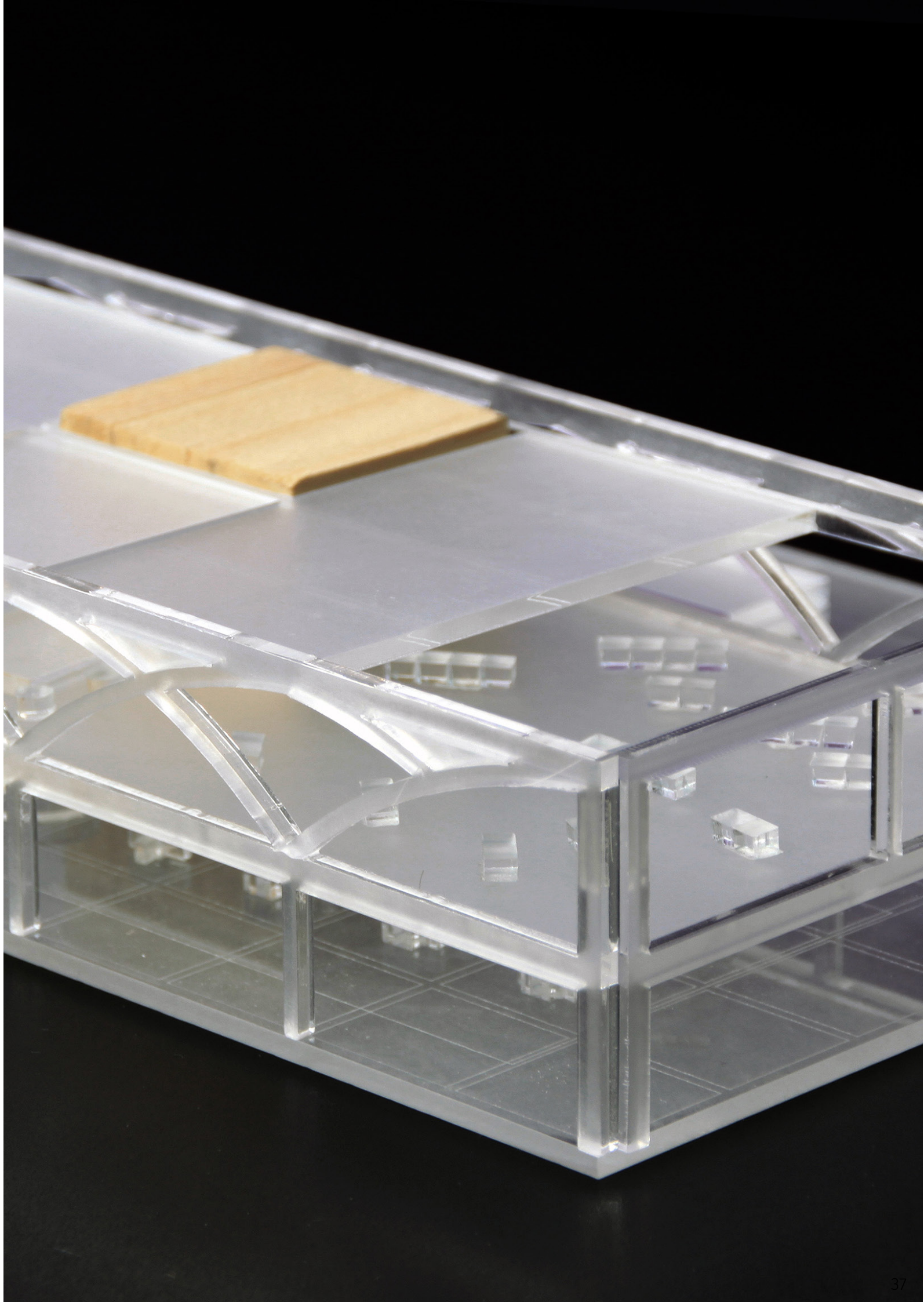
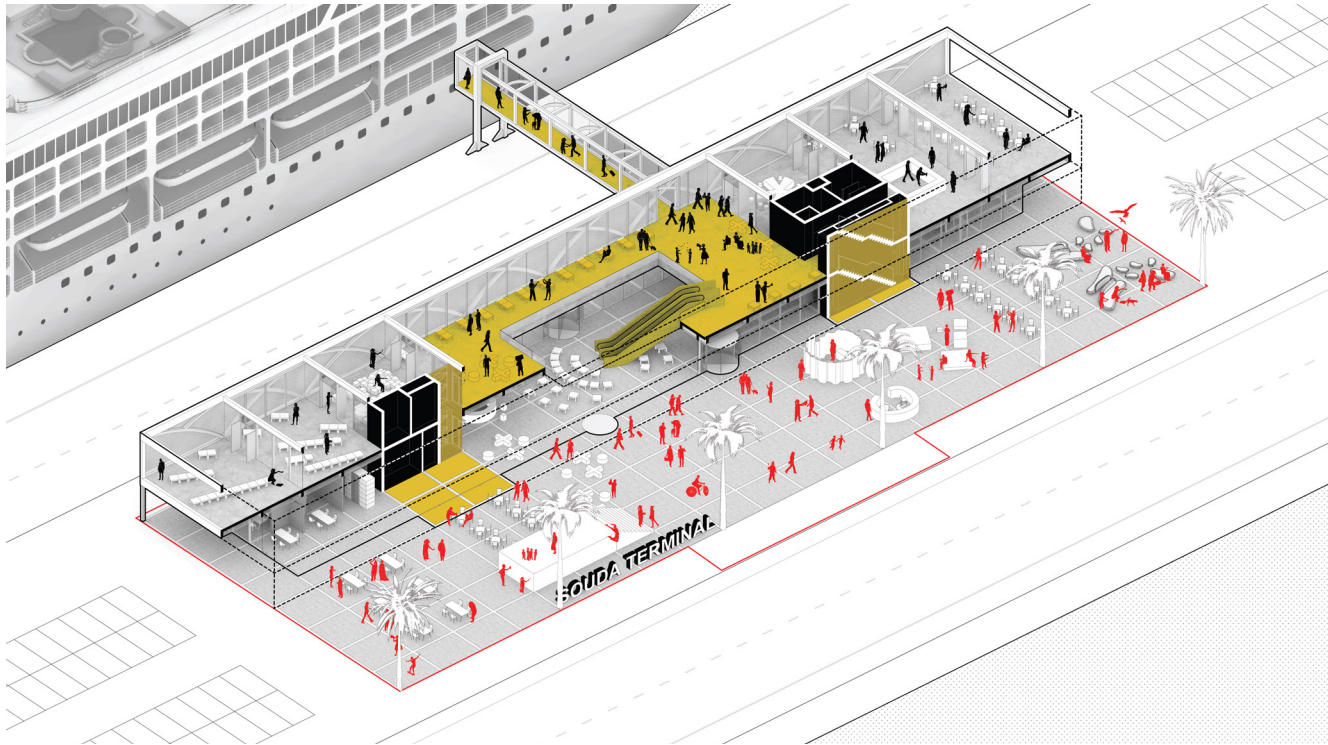
will be approaching the pier. As such, the building aspires to function as a modest landmark, a building that is unique not only by its design but also in the way in which it is integrated in the port and its surrounding context. The program of the Terminal is arranged in two floors with an overall height of less than 10 meters. The ground floor is recessed to provide shaded space in the perimeter and the main entrance, and it contains the main lobby and visitor's services, check-in areas, administration offices, utilities and secondary spaces. The first floor is connected to the lobby through a large atrium and an escalator, and contains the main waiting areas of the Terminal, the café and the jet bridge connections to the boats.





entrance

The notions of the arrival, pause and departure are expressed through the translucency, the clean volumetry and the continuous flow of the terminal. The volumetry refers to the purity of the anonymous architecture in the Greek islands, the structural system of the trusses is a reference to the Venetian shipyard geometry and the translucent shading surface is an element that connects it to the industrial identity of the port.



regional library

Pencho Slaveykov

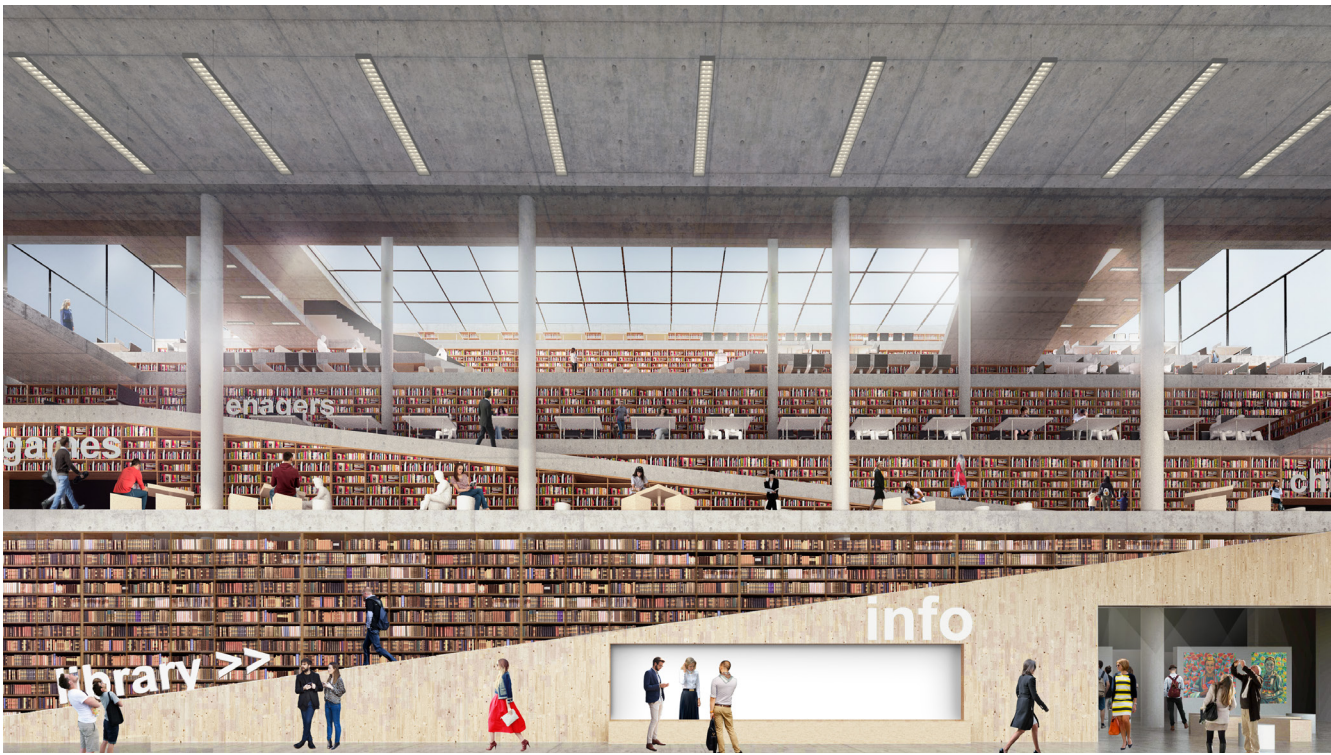
1st prize, under construction

Varna BU, 2020
17 500 m2

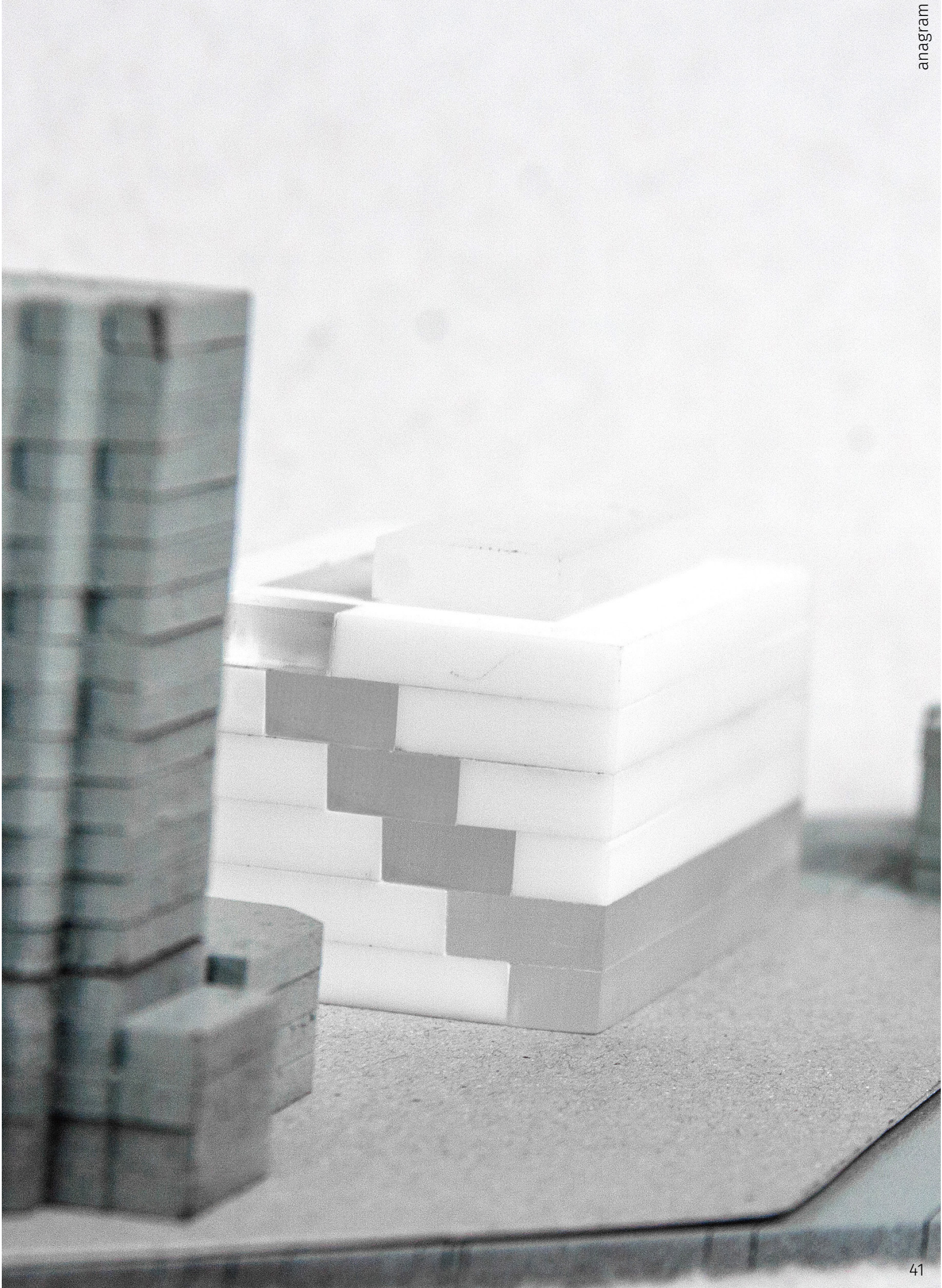
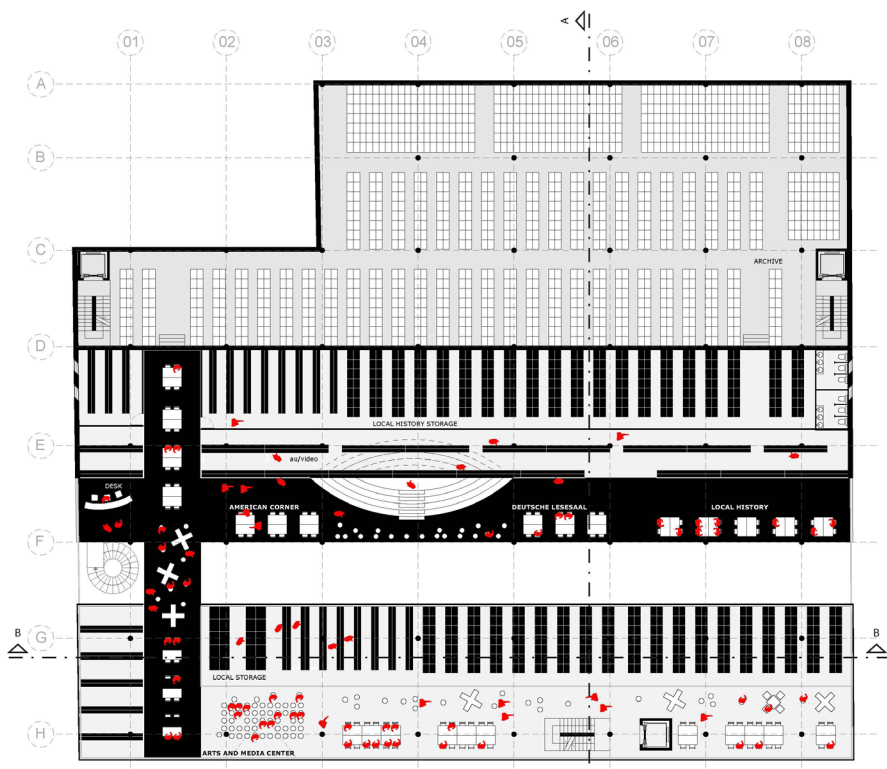
Subtracting a large longitudinal void across a compact orthogonal volume, we propose a symbolic gesture that creates 'air', space for the etheric body - the knowledge - to be developed. The open space of knowledge divides therefore the mass of the building into two solid volumes. The backside volume is fragmented in three large zones, so that on the back of the building a 'spine' is created, a well-structured verticality that accommodates the archive and the administration. The slabs of the two remain-

ing volumes are shifted; the void is distorted. The ground-based volume is shifted towards the city, opening up knowledge to the public. Geometric contour lines form a climax, bare the library's fetish, the books and the book stacks. The climax unfolds till the ground floor and expands outside the building. The 'library' is given back to the city. The floating volume performs as a condensed act of knowledge; an Act On the book; 'devouring' the books; absorbing knowledge; learning.





Geometric contour lines form a climax, bare the library's fetish, the books and the book stacks. The climax unfolds till the ground floor and expands outside the building. The 'library' is given back to the city.





anagram architecture

Agiou Nikolaou 9 117 41 Athens Greece . +30 6943497458 . hi@anagram-arch.com . www.anagram-arch.com