

School of Fine Arts_Florina

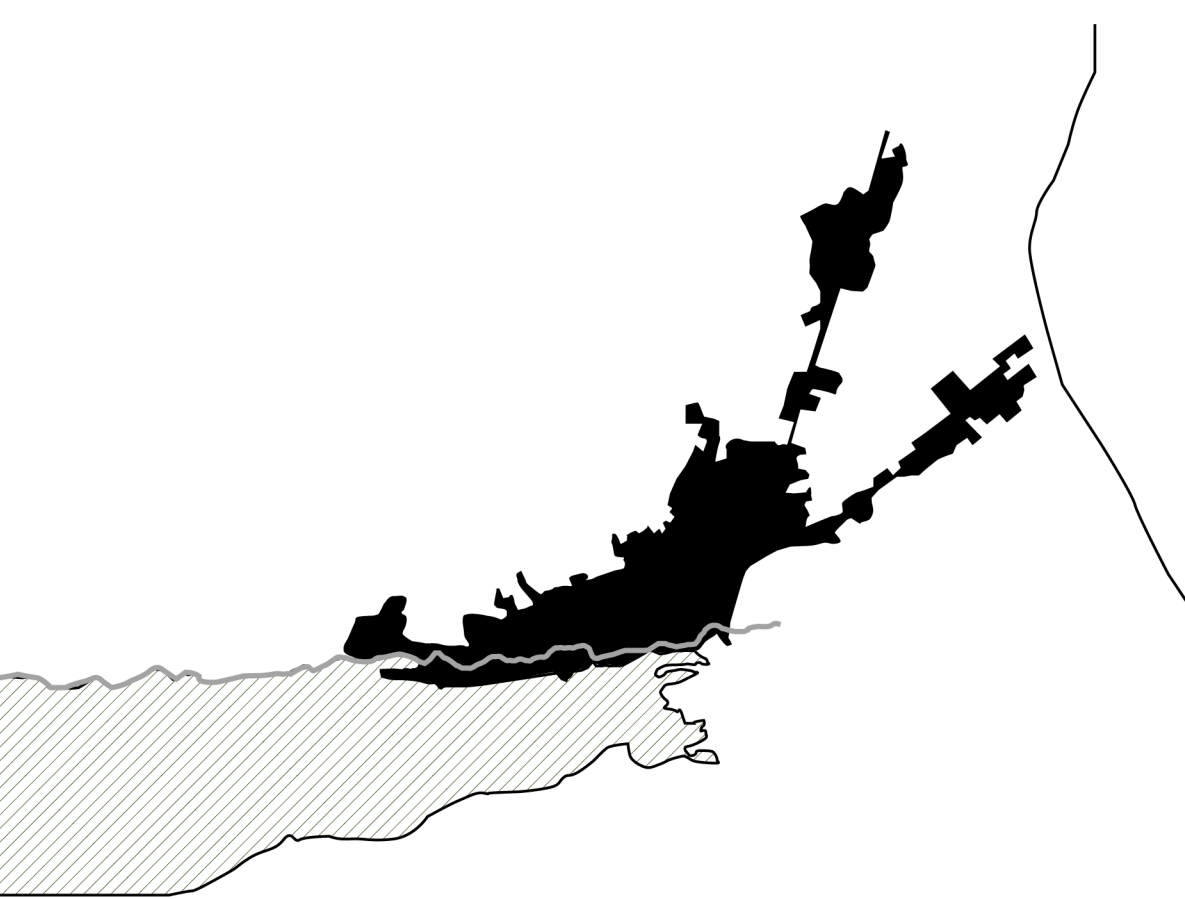


COMPETITION ENTRY
MARCH 2019

01



CULTURAL ANALYSIS



History

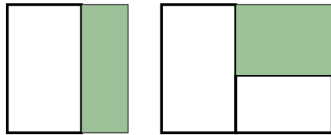
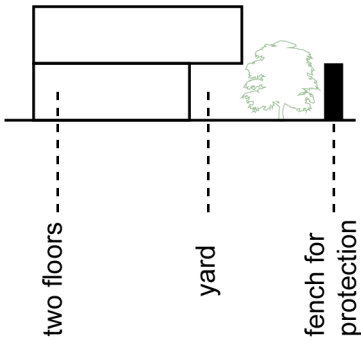
Name

Χλερίνος (Chlerinos) / Florina (after 15th Century) =
Blooming City, Full of Vegetation

_The city of Florina, is a creation of the modern times. However, the wider area is inhabited since prehistoric times. The history of Florina begins around 352 BC when a settlement with acropolis was built on the hill of Agios Panteleimonas.

Florina of Muslims

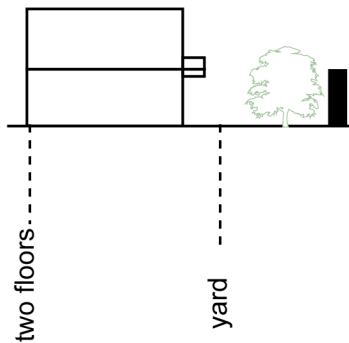
The houses of this period are mostly wooden with clay blocks



- _Turkish
- _Albanian
- _Gipsy

Florina of Immigrants

The buildings of this period are neoclassical. The main materials were stone and brick.



- 1886_ First neoclassical house
- 1905_ Many public buildings and several houses at the river coast

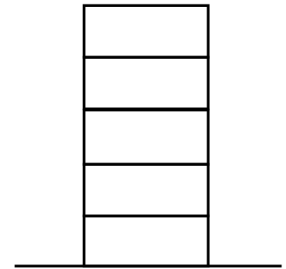
1950_ The last neoclassical buildings



- _1913/1918 _Immigrants from Monastiri
- _1913-1943_ Jewish Immigrants
- _1921_ Greek Immigrants from North Hpeiros
- _1923_ Immigrands from Læsse Asia

Florina of Concrete (1960)

Many buildings from the previous era were demolished and many blocks of flats were built. The main material is concrete

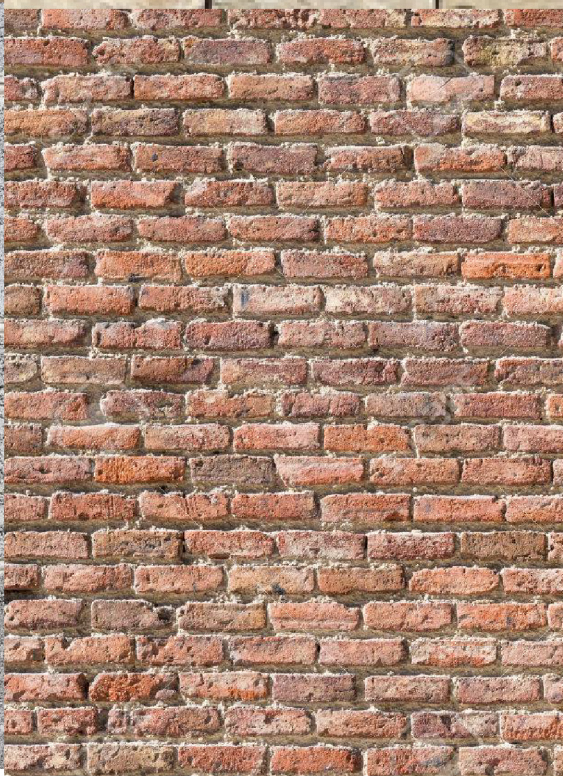
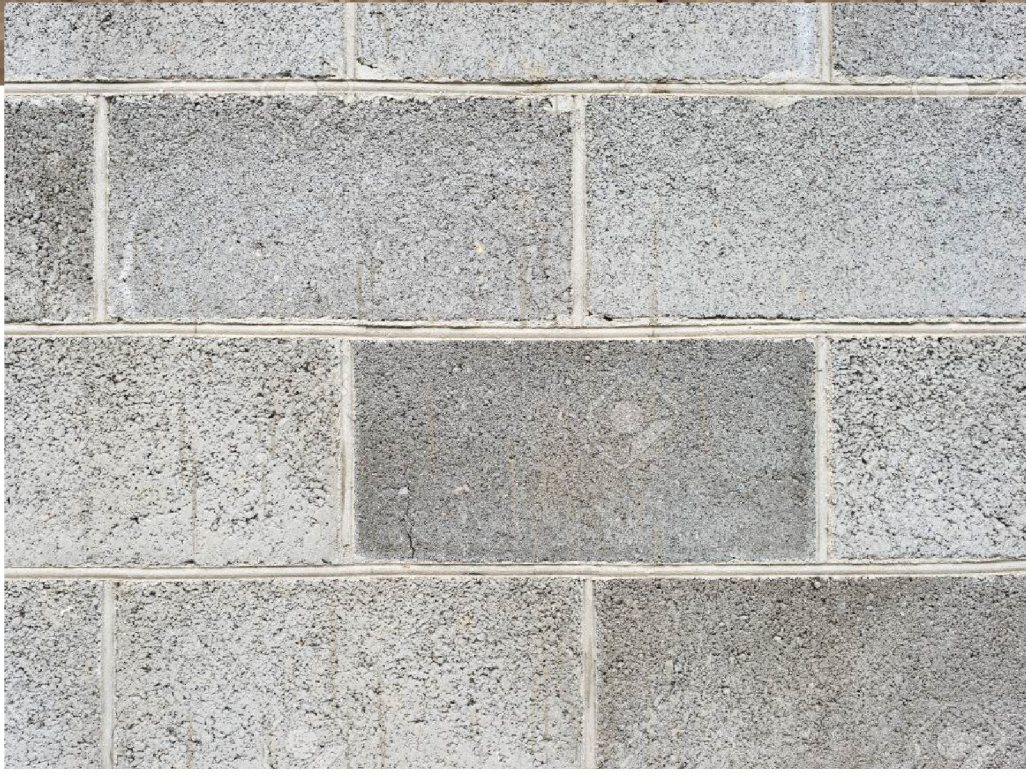


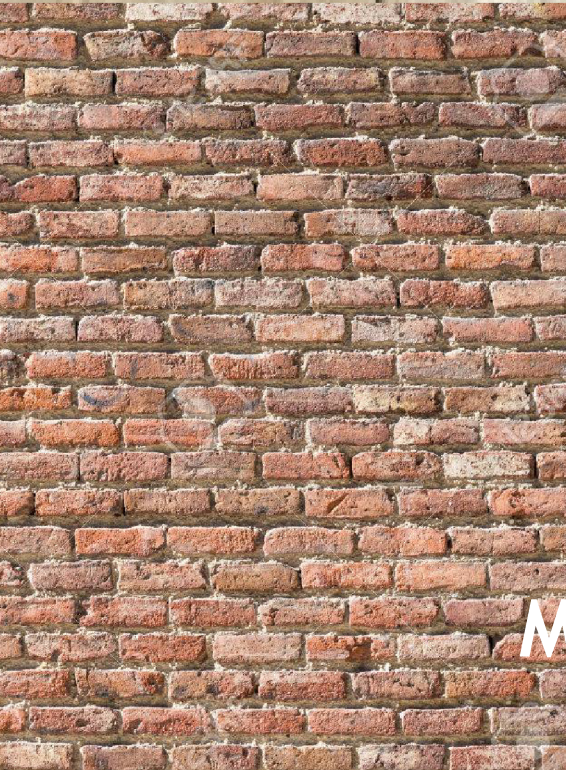
After 1960 there is a period of internal migration. Many people came to Florina for educational or economical reasons





ARCHITECTURE OF THE CITY





MATERIALITY OF THE CITY





1.2_ THE CITY OF FLORINA 2019



CITY THROUGH

THE INTERIOR CENTRAL SPACE_SALA



**THERE WERE TWO TYPES OF HOUSES
THE VILLAGE HOUSE AND THE MANSION
HOUSE.**

**AT THE VILLAGE HOUSE SALA WAS A
WORK SPACE.**

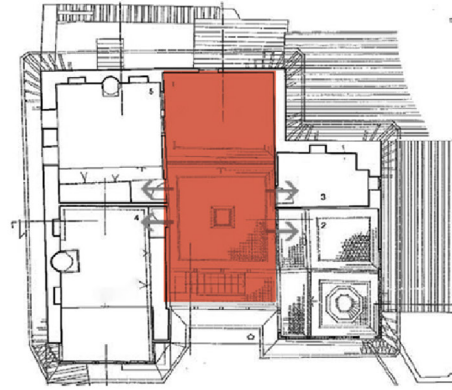
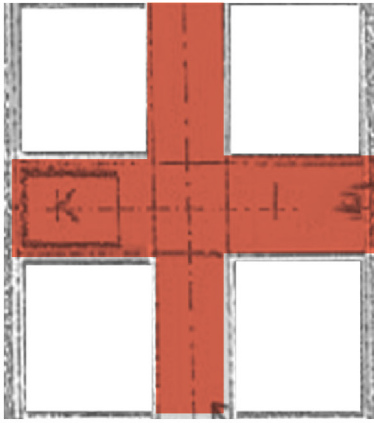
**AT THE MANSION HOUSE IT SALA WAS
A PLACE FOR DINNERS AND SOCIAL AC-
TIVITIES.**

DOMESTIC LIFE

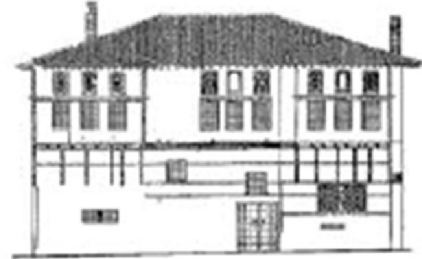
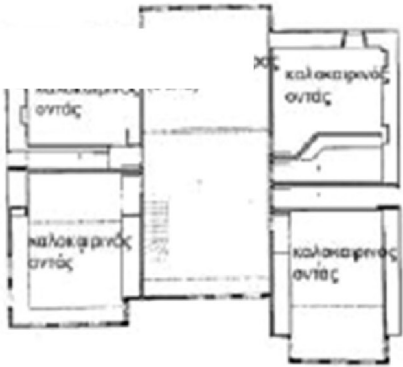


THE EXTERIOR_ COURTYARD

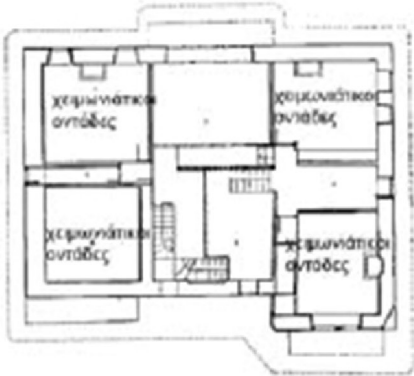




THE CENTRAL SPACE_ DIFFERENT TYPES OF PLANS



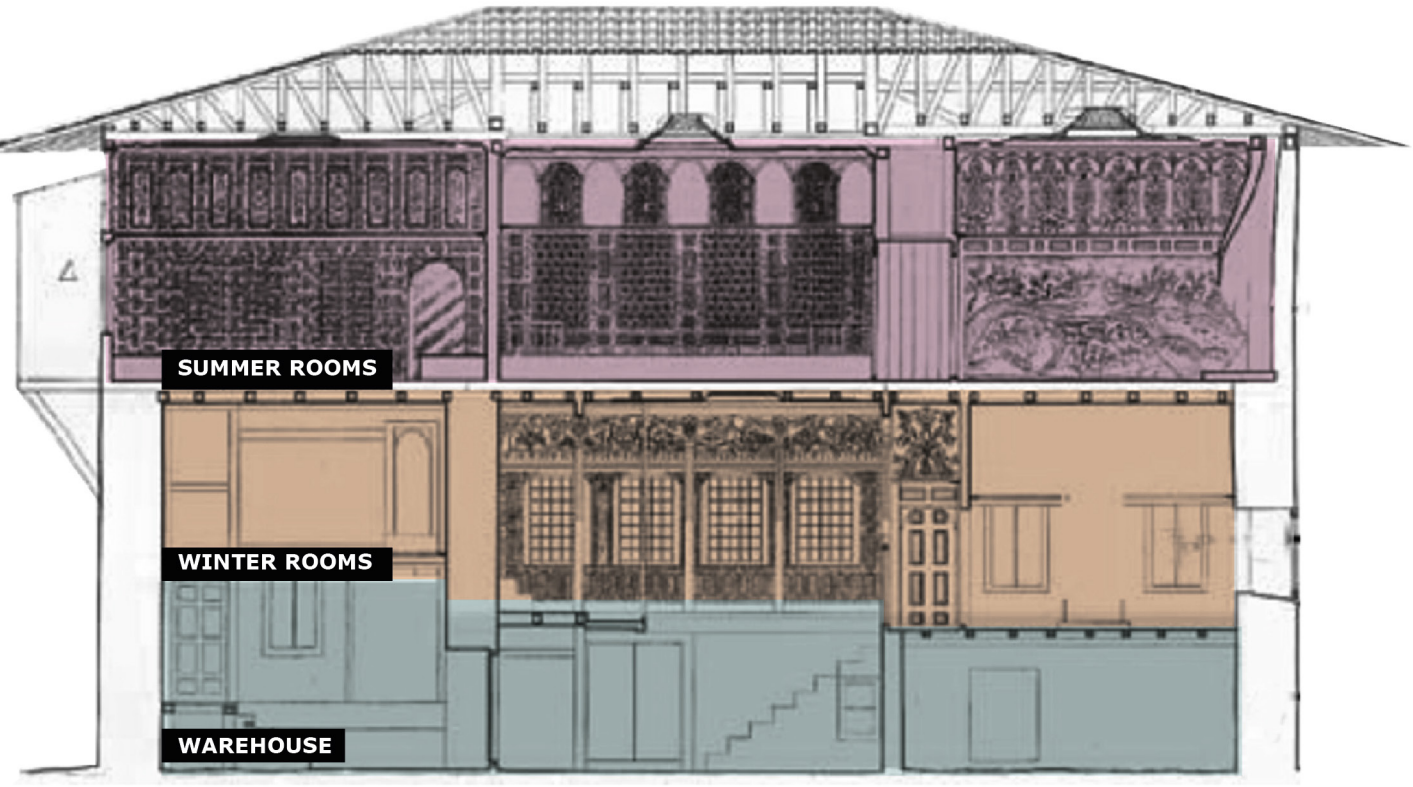
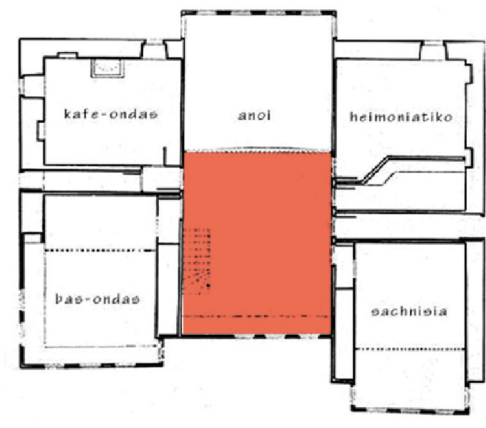
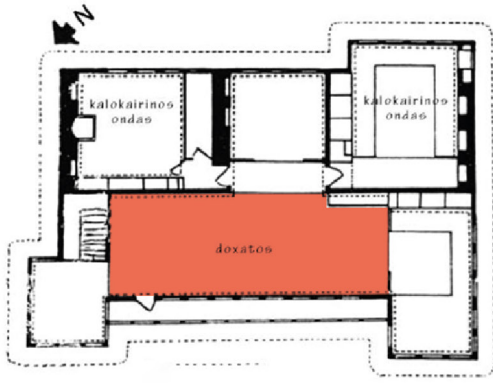
2ND FLOOR



1ST FLOOR

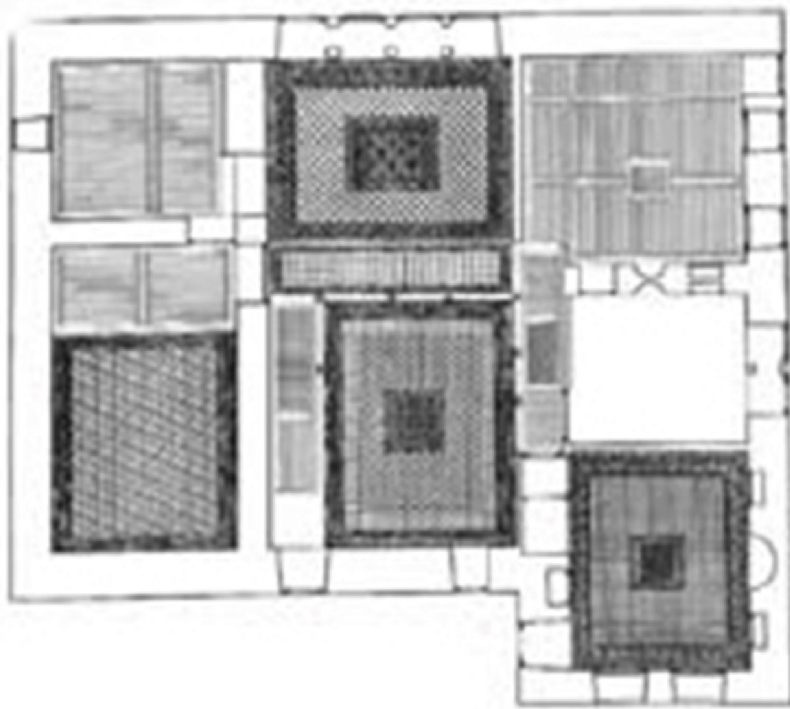


GROUND FLOOR

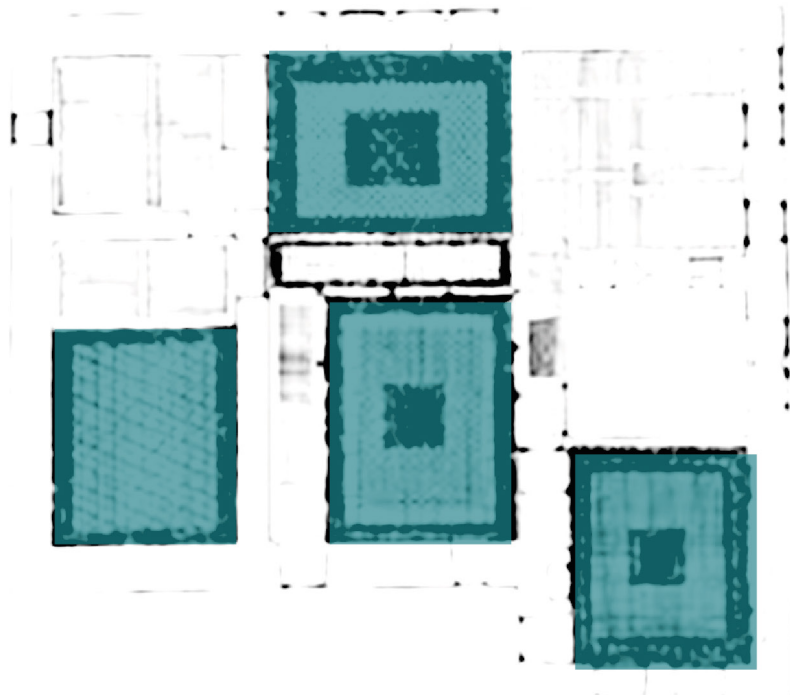


THE SECTION

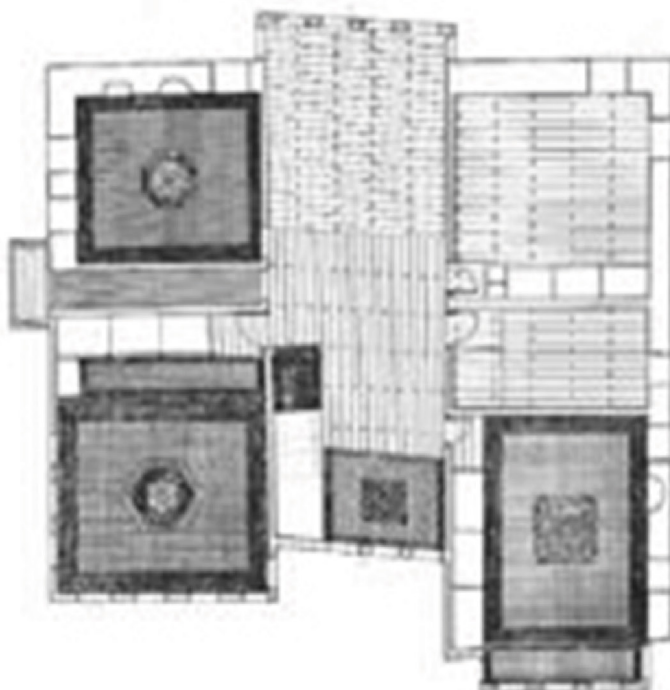
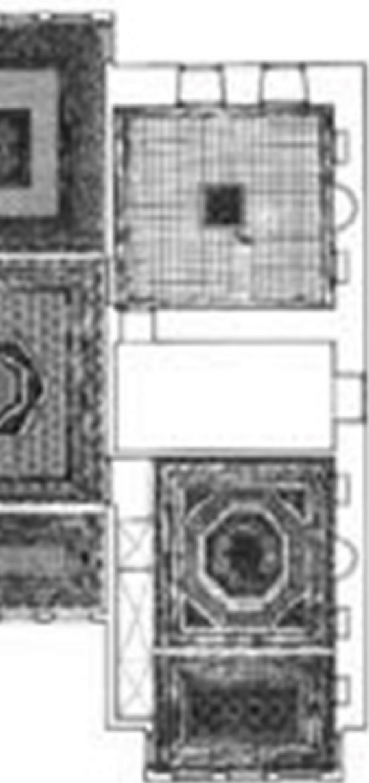
PUBLIC VS PRIVATE LIFE



THE WOODEN CEILING

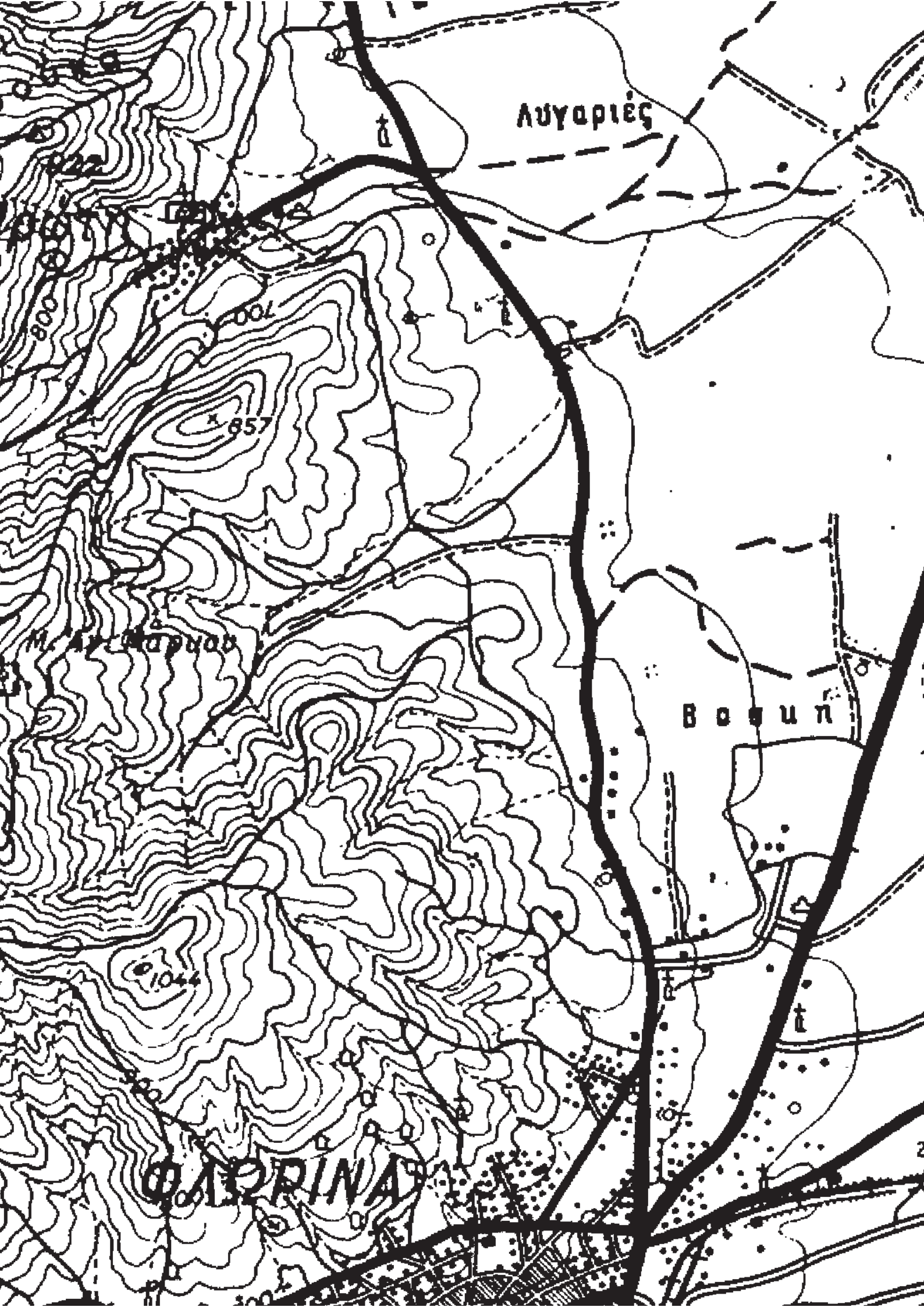


DEFIN



THEY USED TO DIVIDE EVEN THE
CEILING OF ONE ROOM IN DIFFER-
ENT PIECES

ITION OF ROOMS THROUGH CEILINGS



ΑΥΓΑΡΙΕΣ

Μ. ΑΓ. ΠΑΡΘΕΝΟΥ

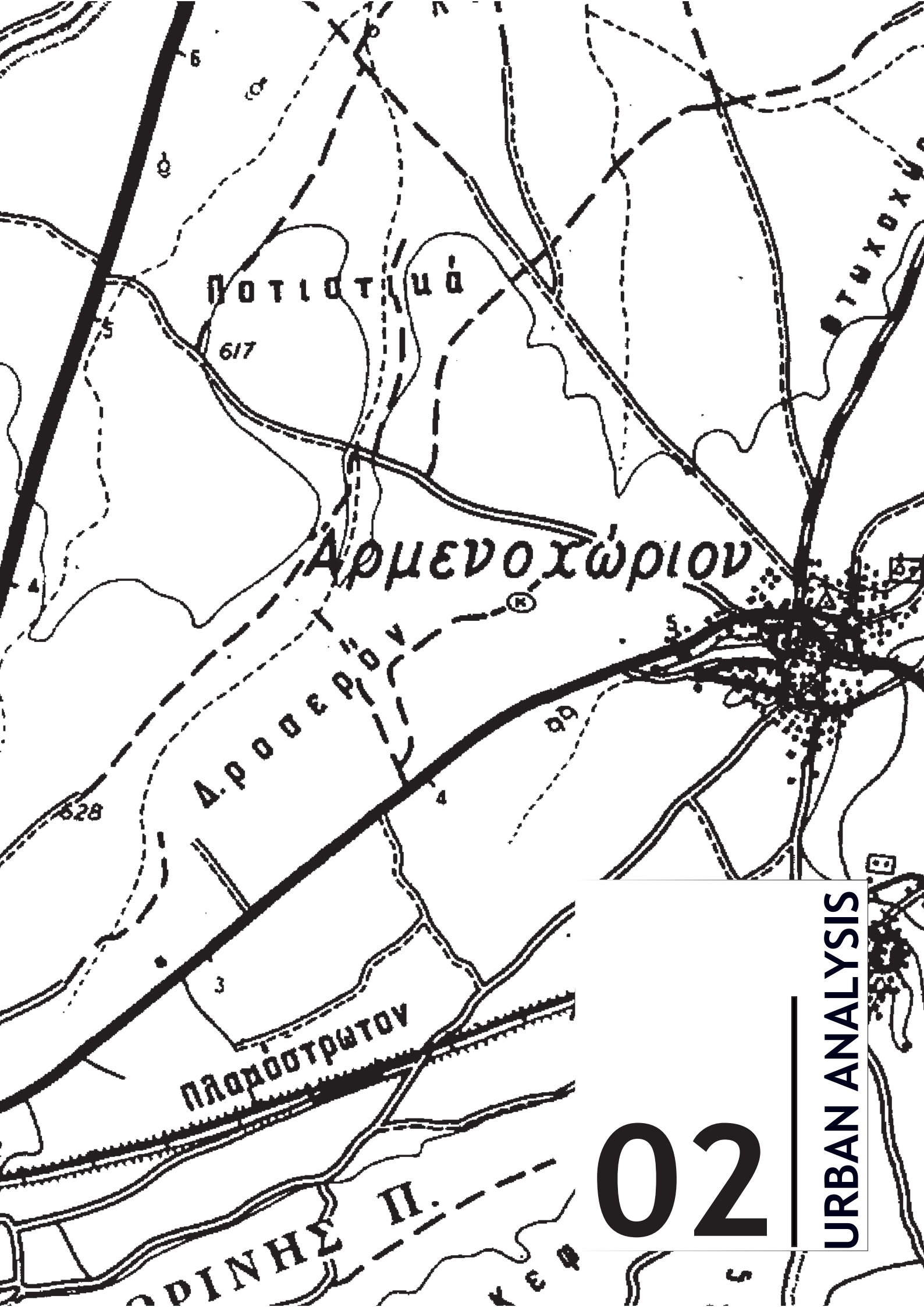
ΒΟΥΝ

ΦΑΛΓΡΙΝΑ

800

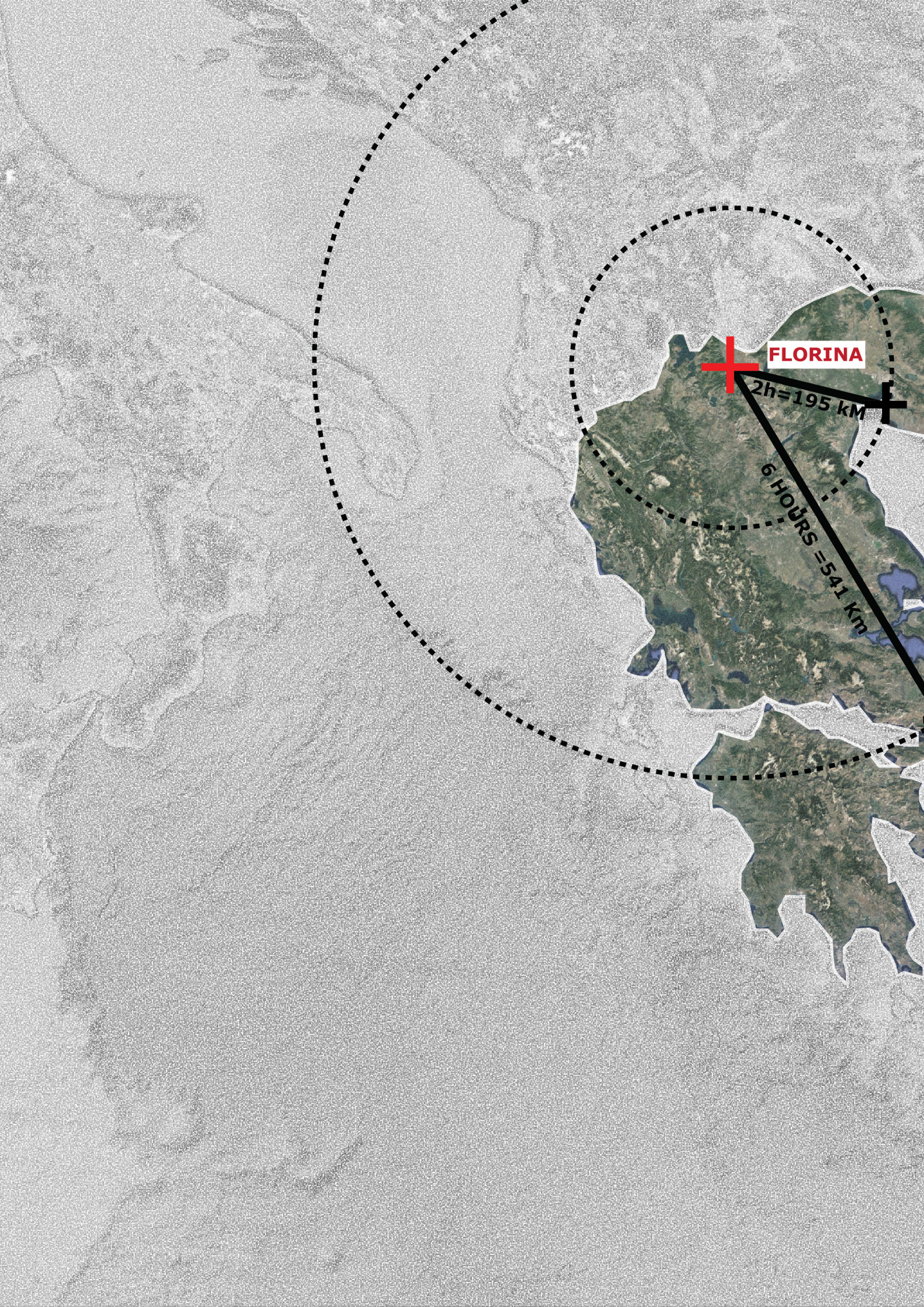
857

1044



02

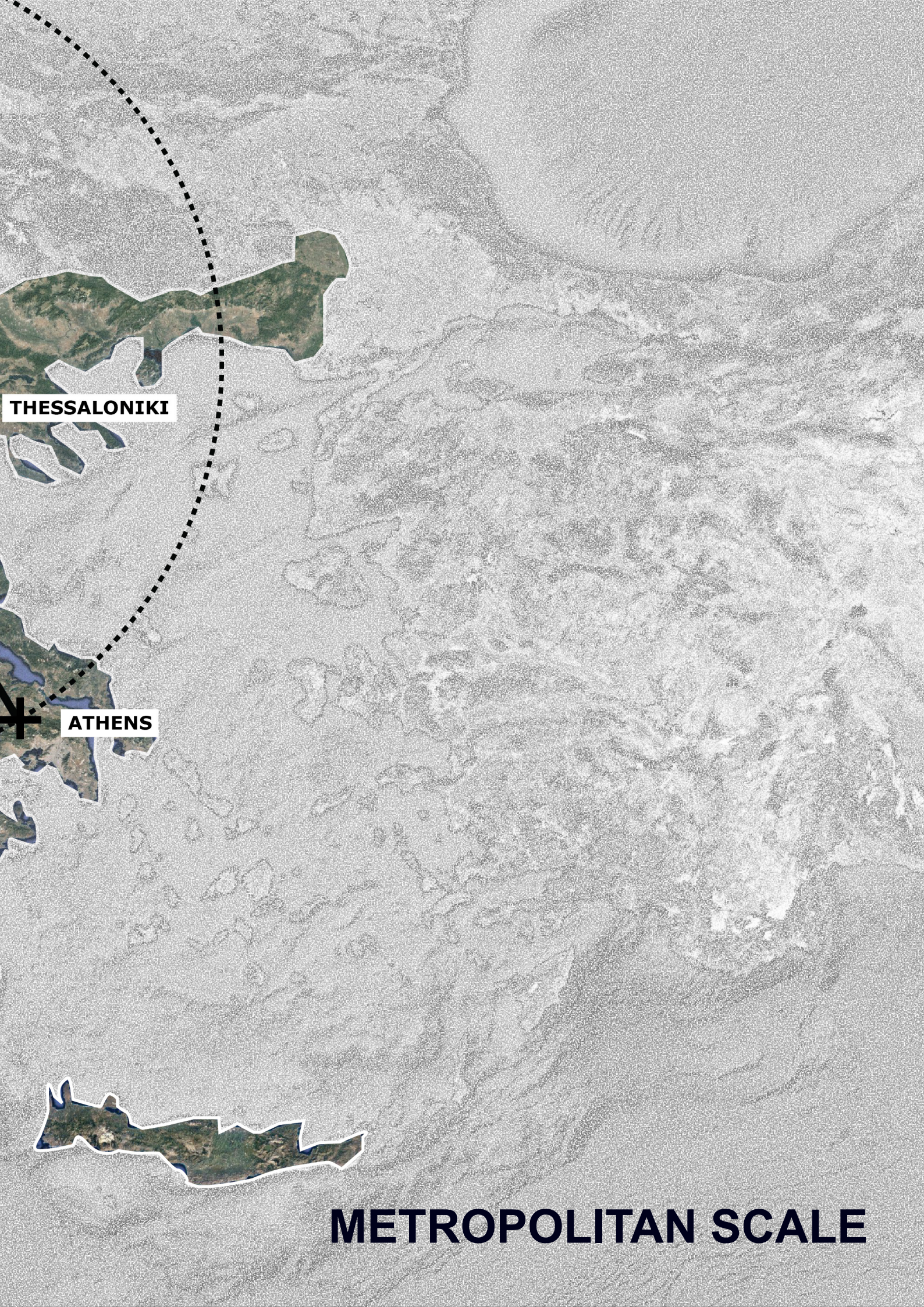
URBAN ANALYSIS



FLORINA

2h=195 km

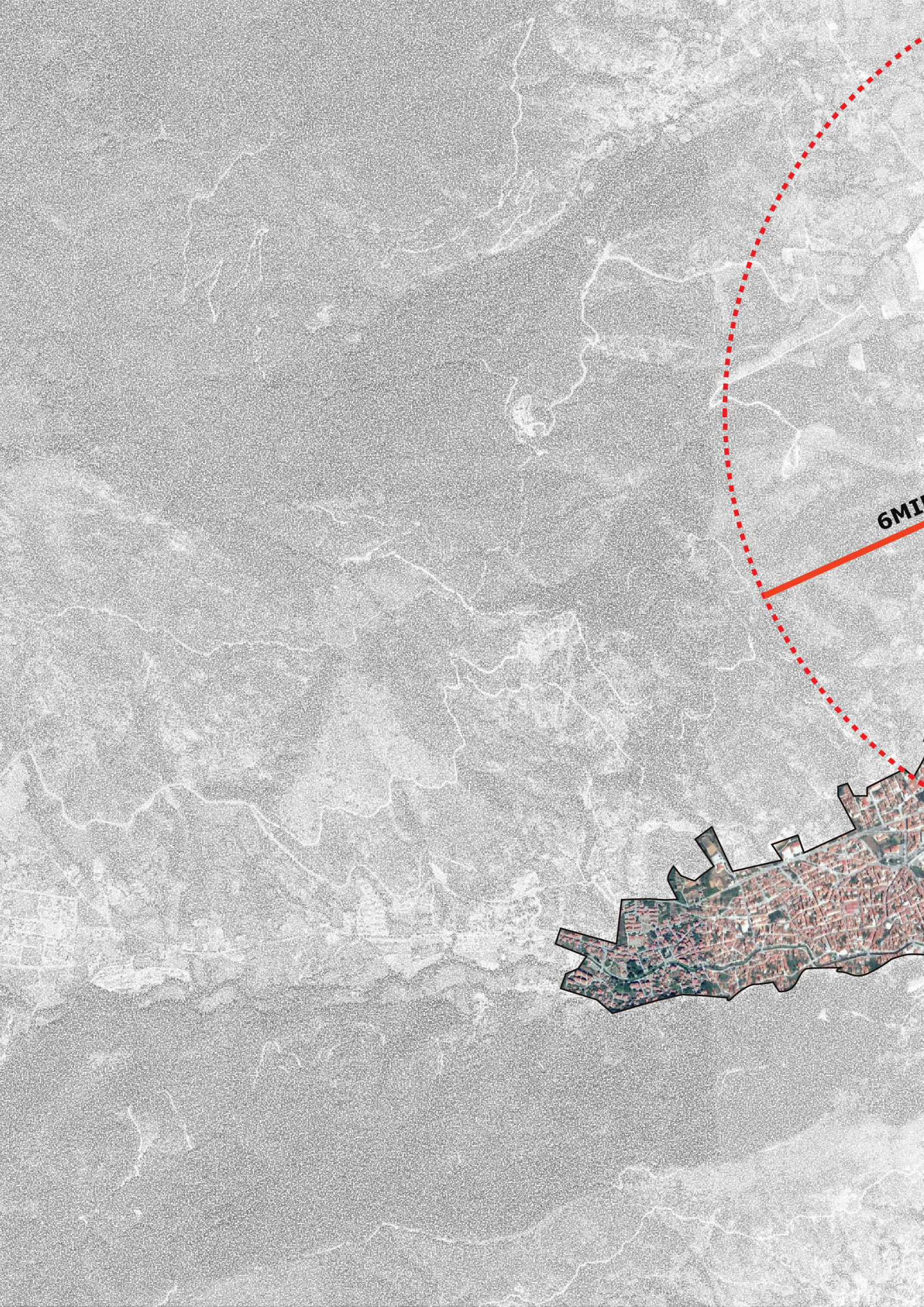
6 HOURS = 541 km



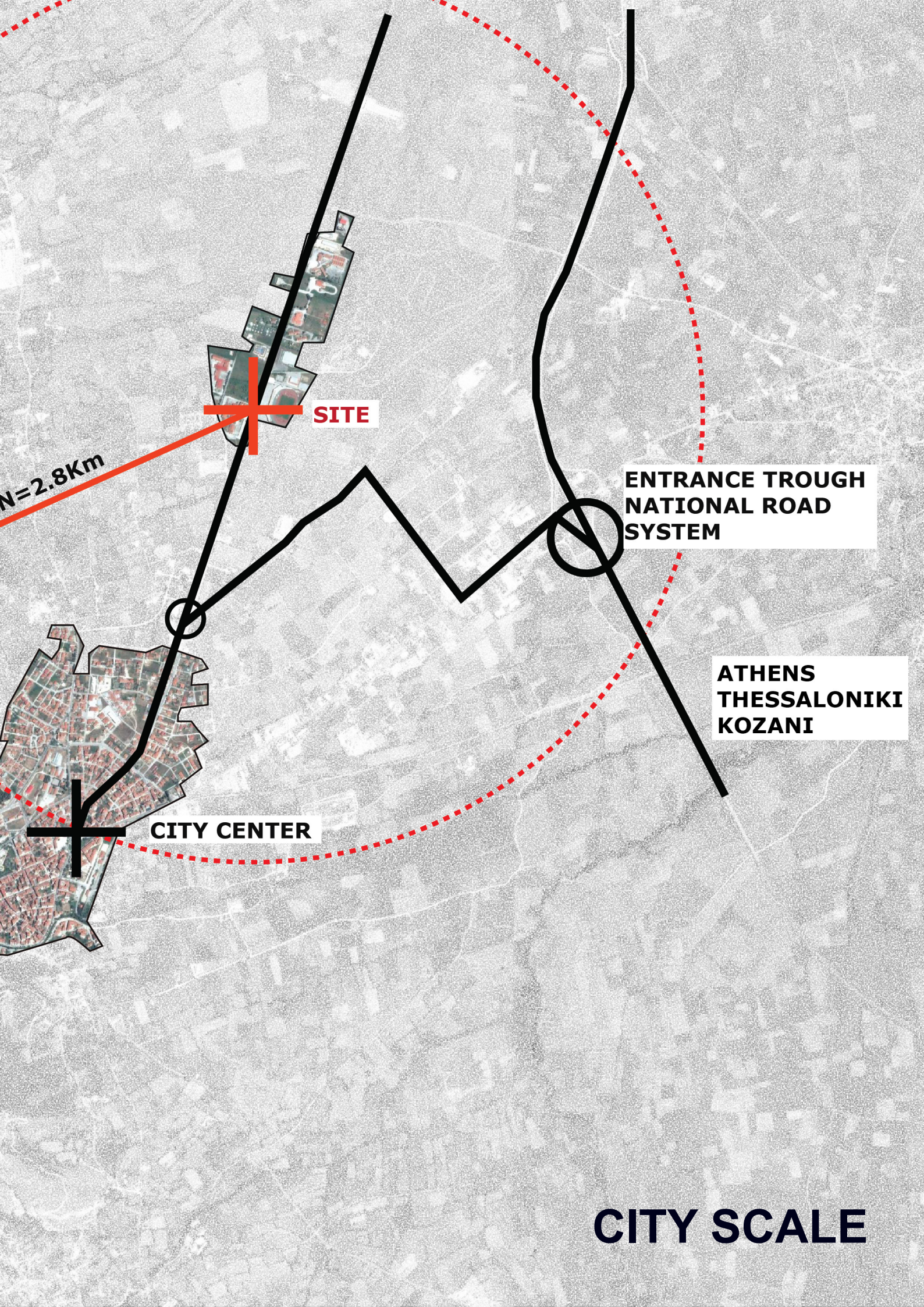
THESSALONIKI

ATHENS

METROPOLITAN SCALE



6MI



SITE

N=2.8Km

**ENTRANCE TROUGH
NATIONAL ROAD
SYSTEM**

CITY CENTER

**ATHENS
THESSALONIKI
KOZANI**

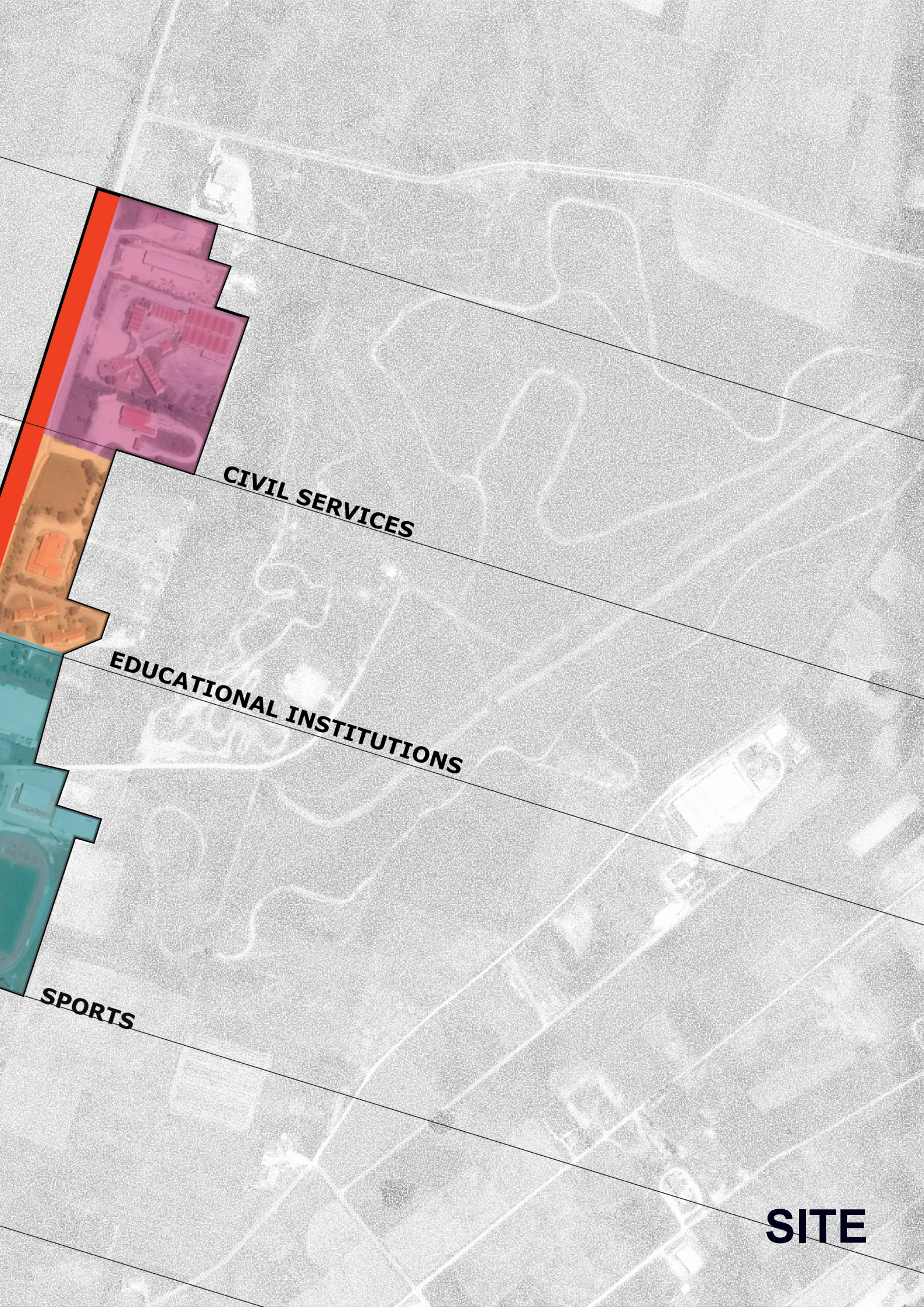
CITY SCALE

EDUCATIONAL INSTITUTIONS

SITE

CENTRAL AMENITIES
EDUCATIONAL INSTITUTIONS



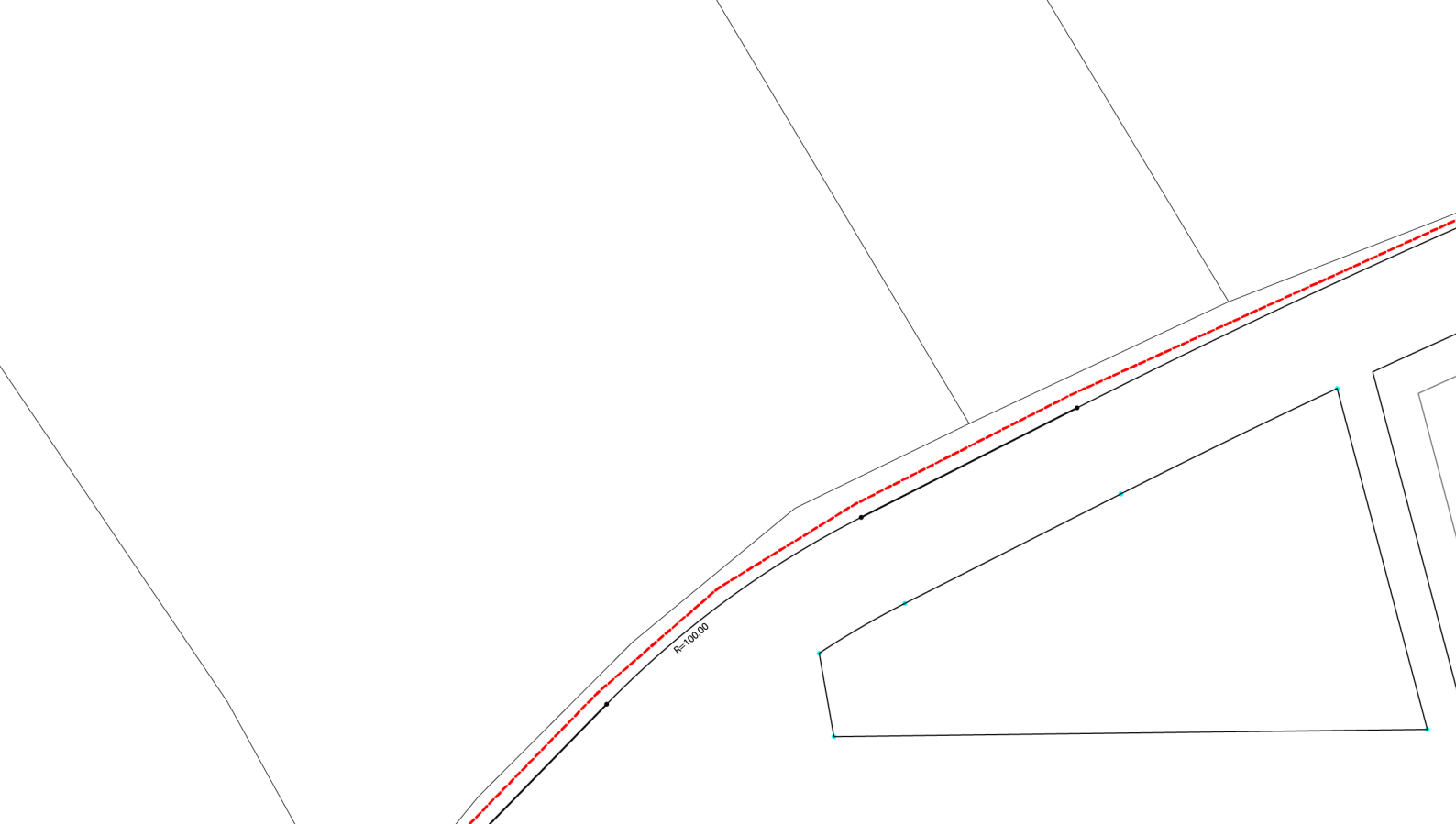


CIVIL SERVICES

EDUCATIONAL INSTITUTIONS

SPORTS

SITE



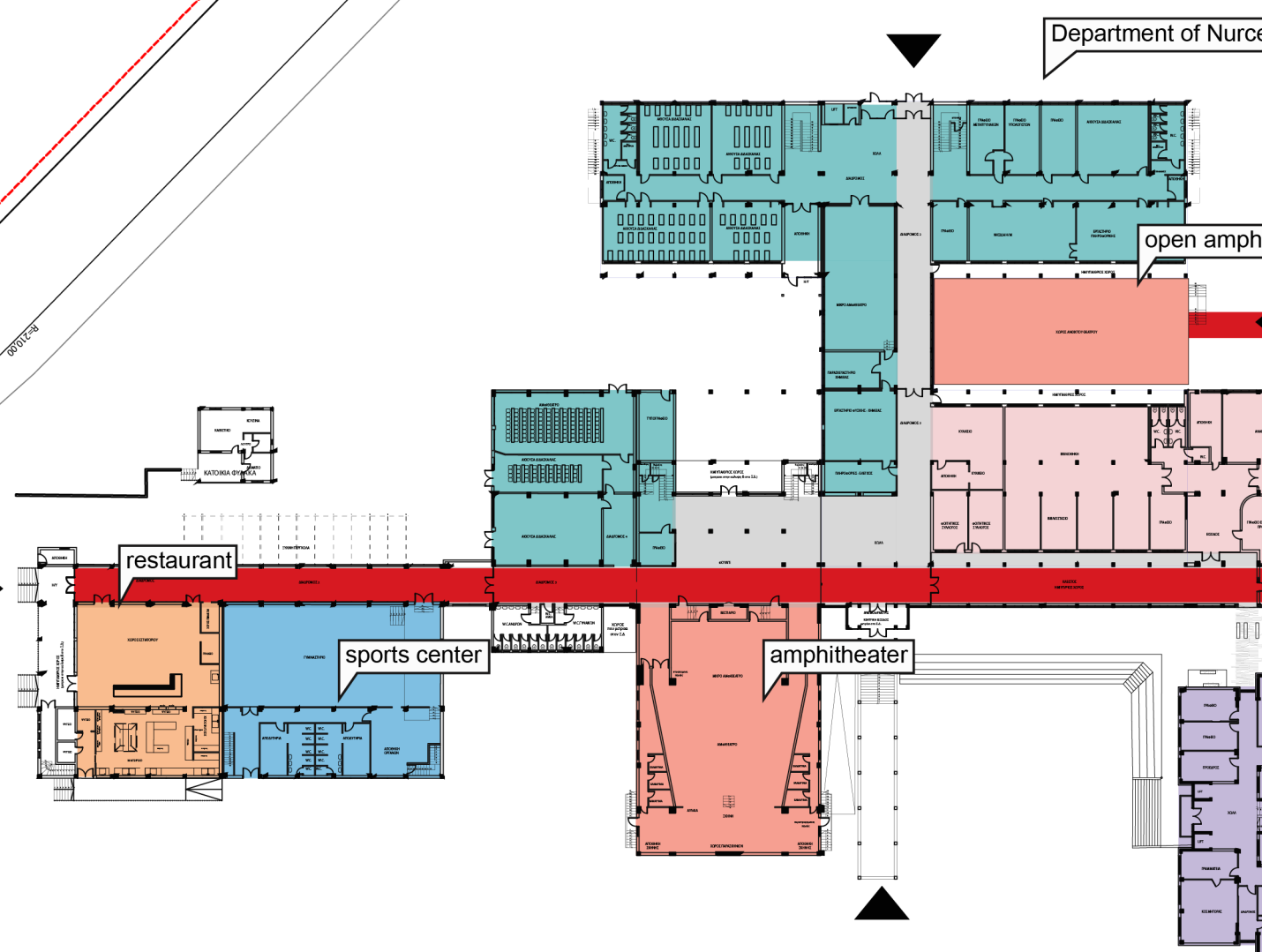
Department of Nurce

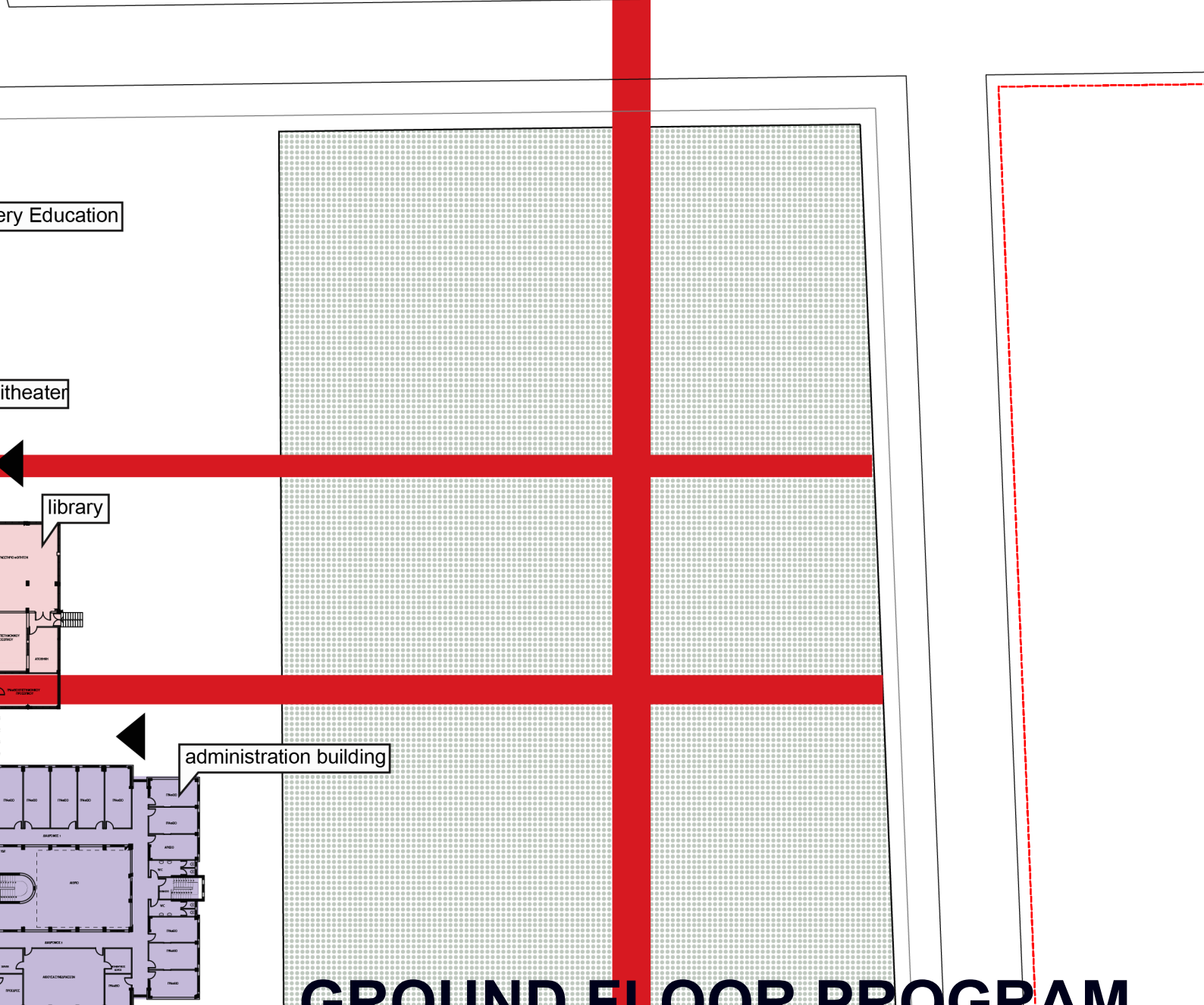
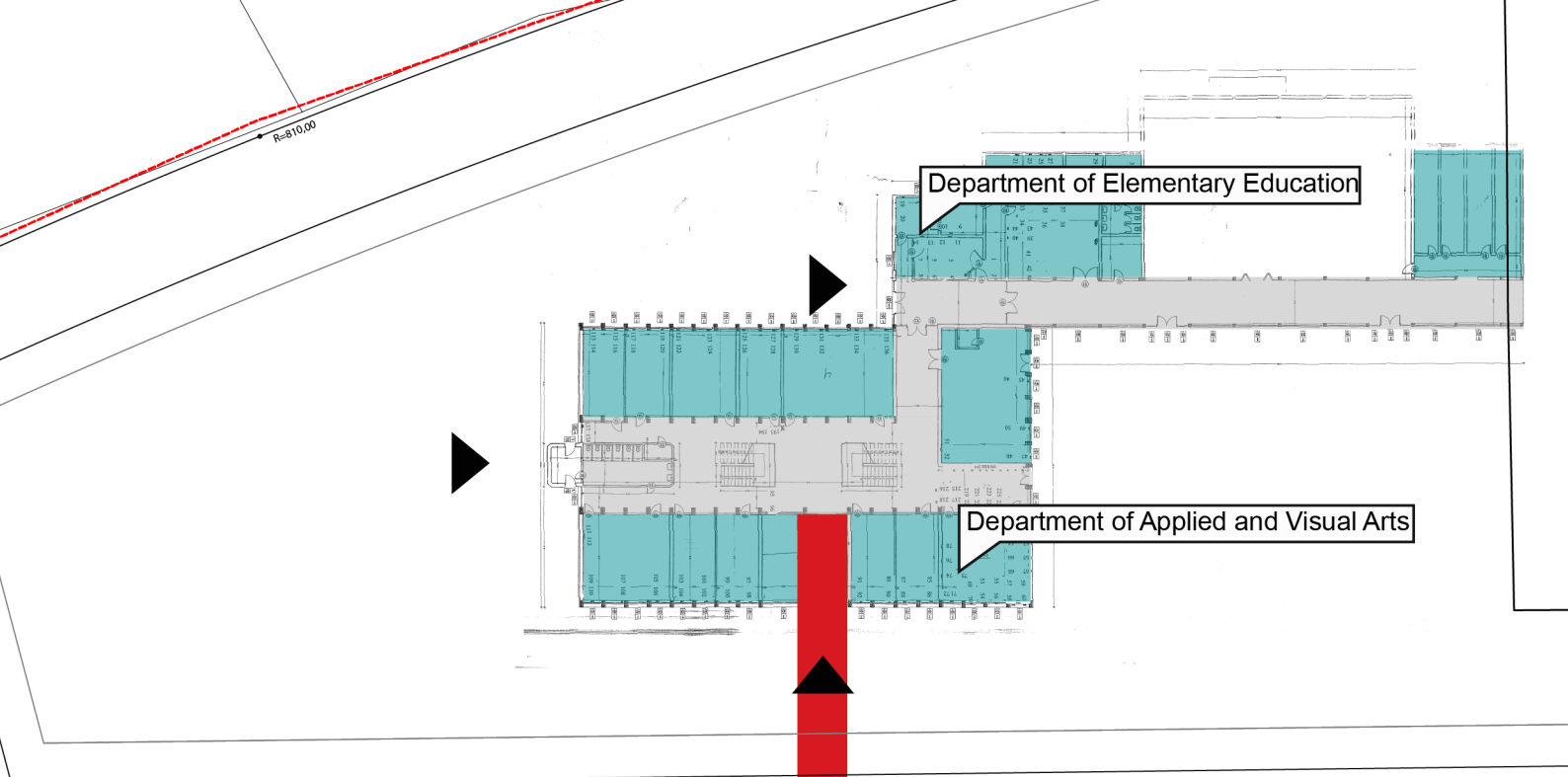
open amph

restaurant

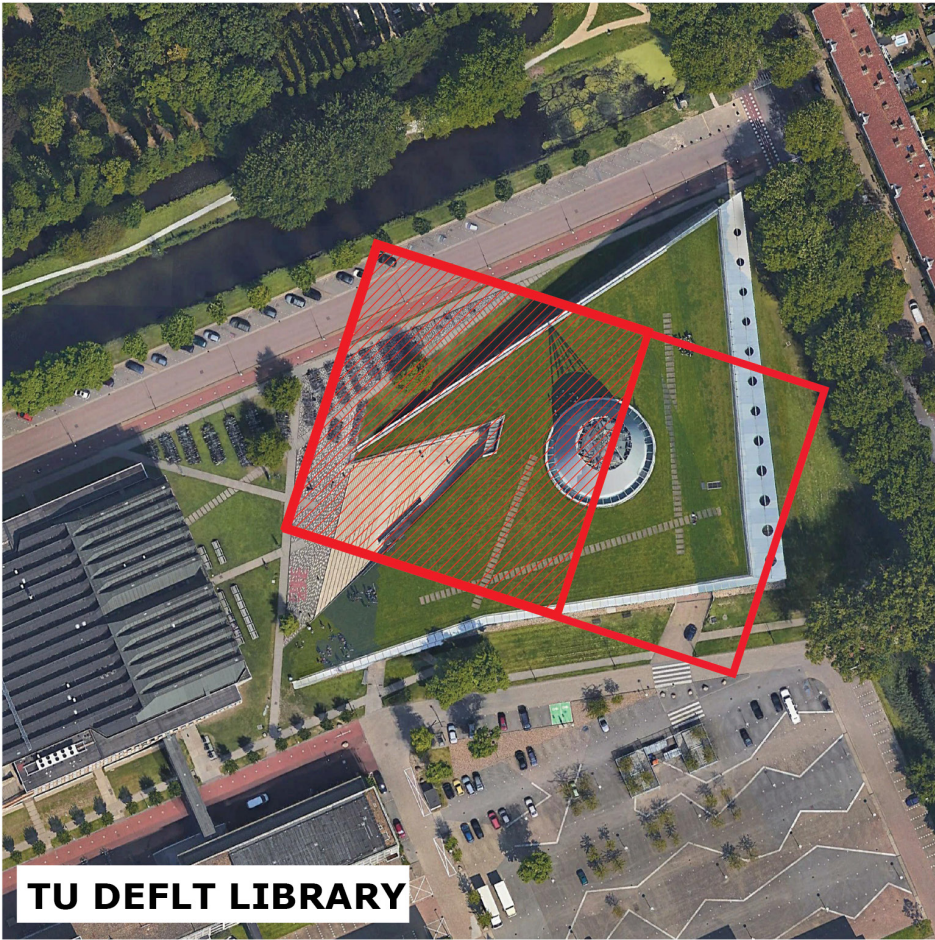
sports center

amphitheater

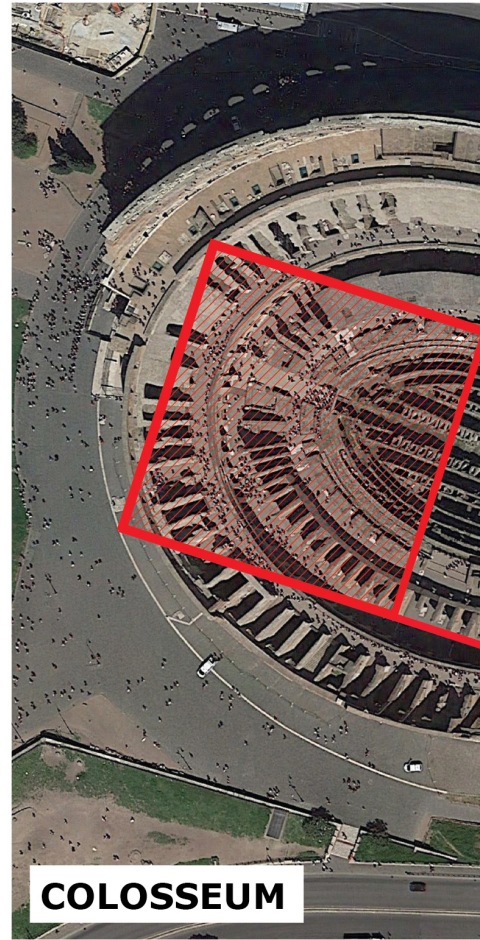




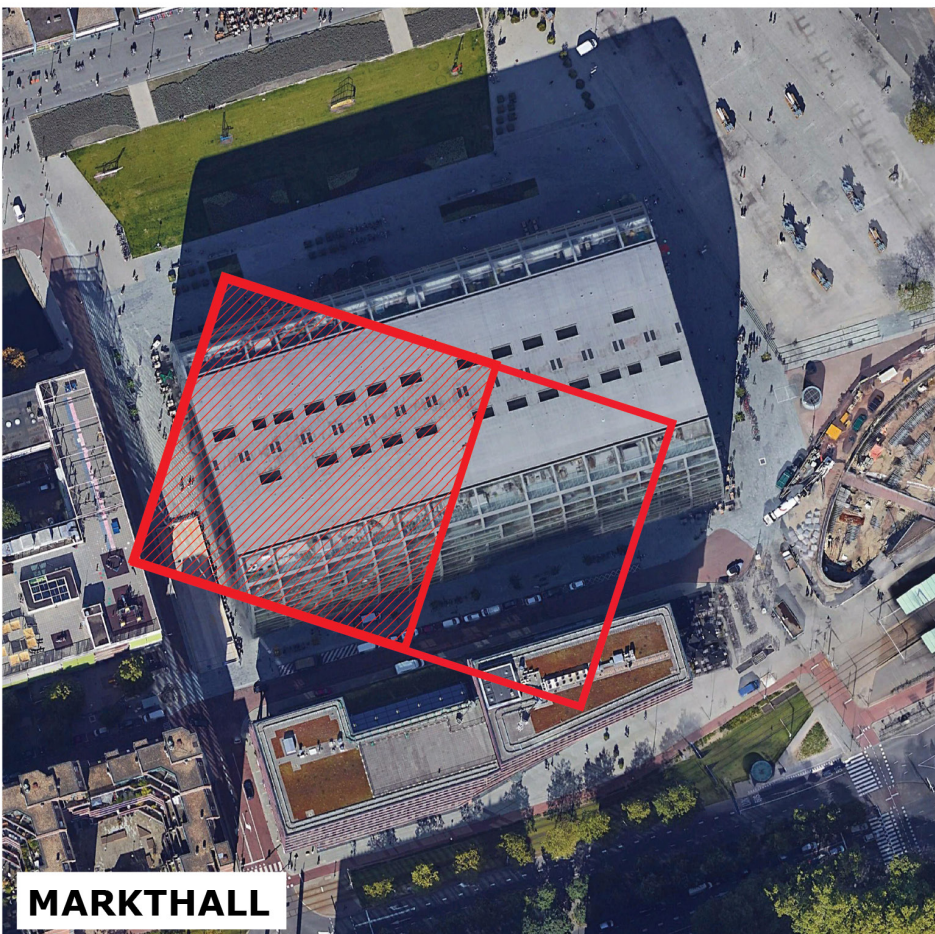
GROUND FLOOR PROGRAM



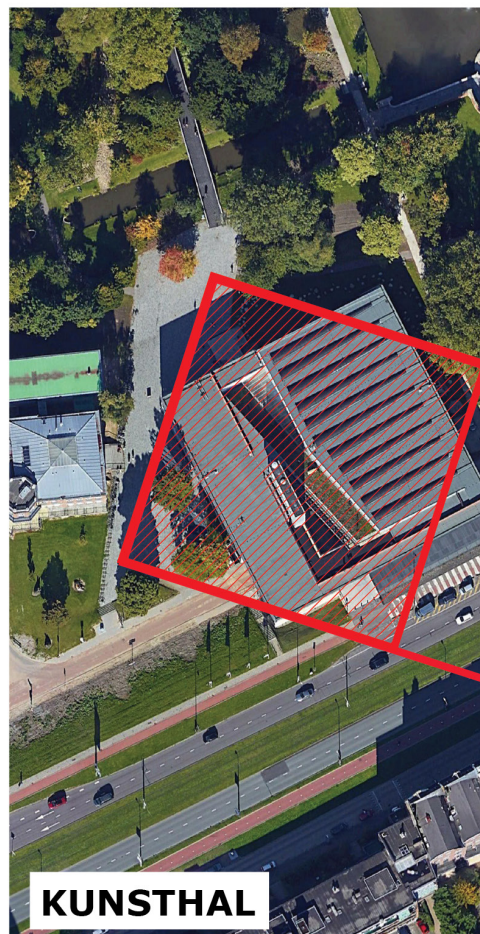
TU DEFLT LIBRARY



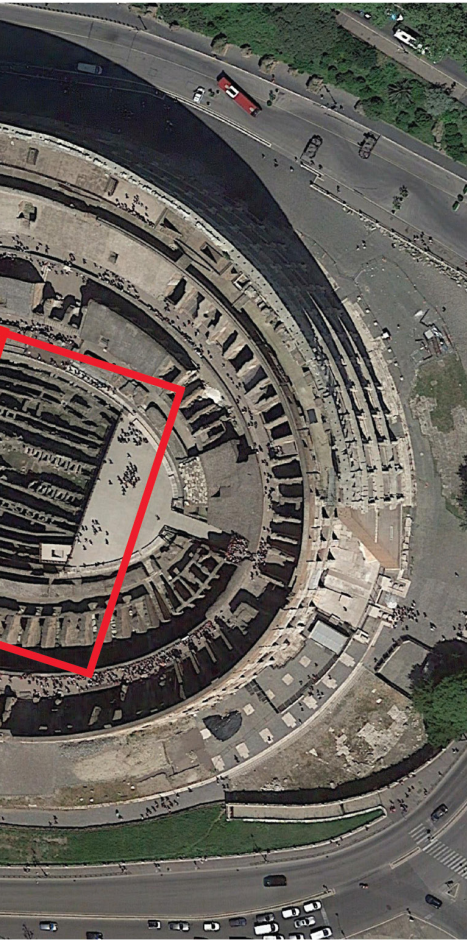
COLOSSEUM



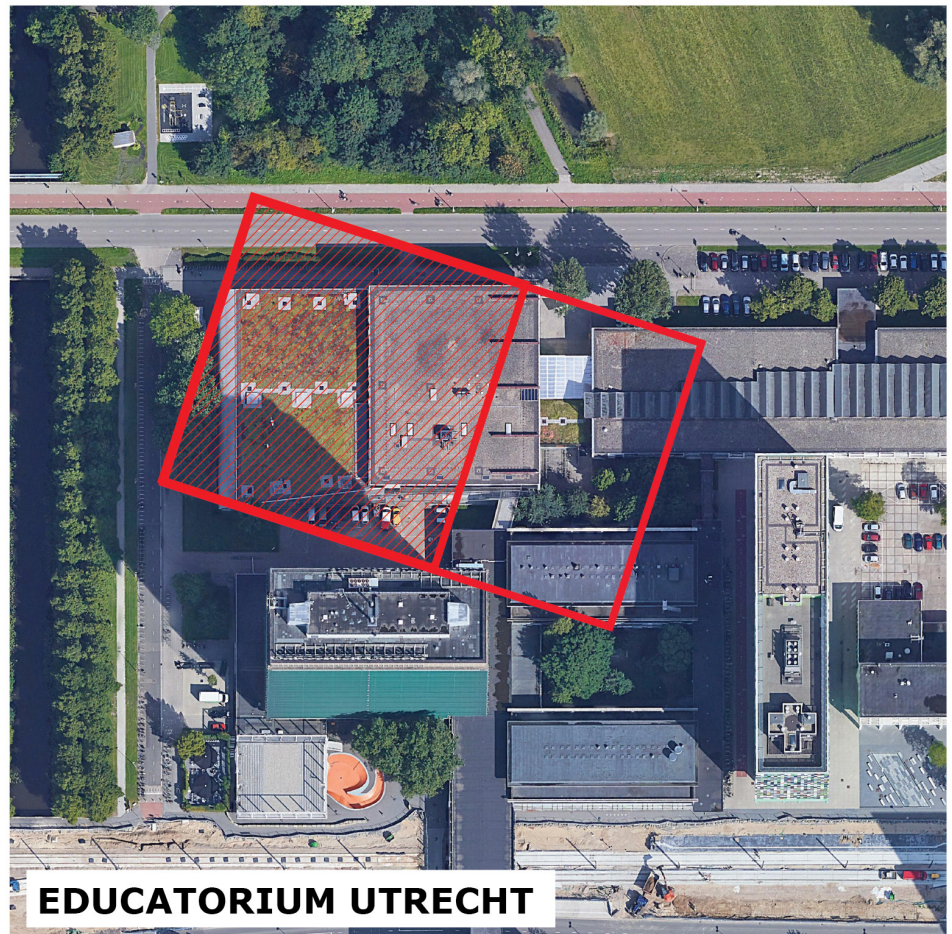
MARKTHALL



KUNSTHAL

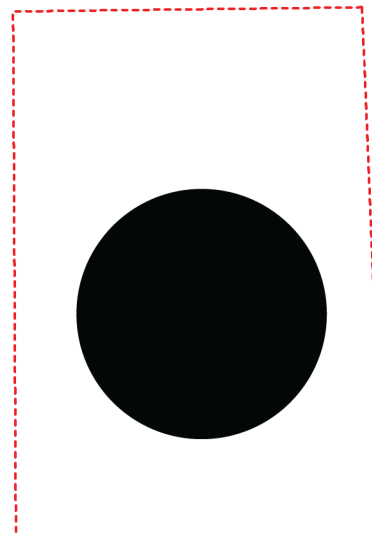
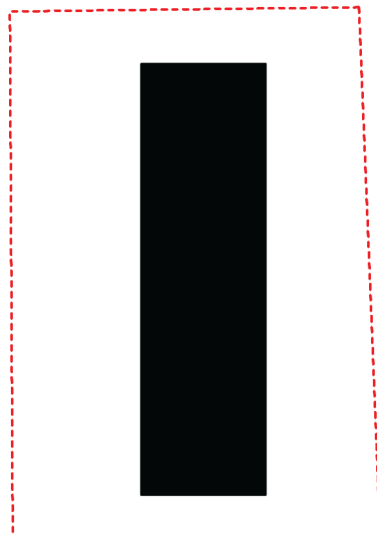
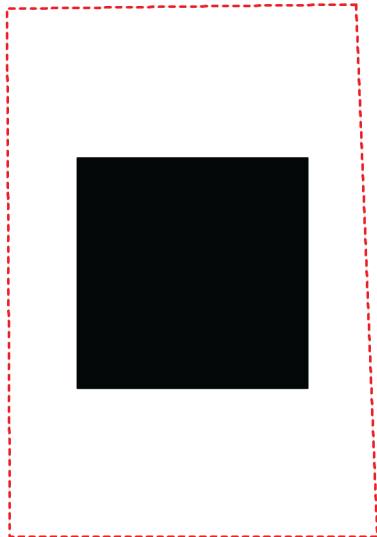
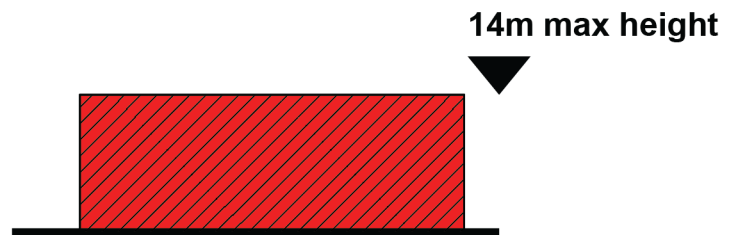


NIARCHOS CULTURAL CENTER



EDUCATORIUM UTRECHT

SCALE COMPARISON



schemes with 2 levels

PLOT REGULATION





03

PROGRAMMATIC ANALYSIS

3.311M2

+
770M2
(underground)

=
4082M2

+
40%
circulation
1.324M2

=
4635M2

TOTAL

ADMINISTRATION AREA

96

AREA TEACHING STAFF

445

TRAINING SITES AND
GALLERIES TEACHING

2260

COMMON AREAS

378

AUXILIARY FACILITIES

132



PROGRAMMATIC BAR

INTERPRETATION OF THE PROGRAM

VOLUMETRY





04

PROGRAMMATIC CHARACTER

EVOLUTION OF ART SCHOOLS



THE AT

A painting depicting a woman in a black dress and hat, seen from behind, painting a portrait on a canvas. She is seated on a wooden chair in an artist's studio. The studio contains various items: a wooden easel with a canvas, a table with a red cloth, a purple chair, and a checkered floor. The background shows a stone wall and a window with shutters.

STELIER

THE WORKSHOP OF THE ARTIST



CAN

A photograph of an artist's workshop. On the left, a shirtless man wearing sunglasses and patterned shorts stands next to a red bucket. In the center, a man with a beard and glasses, wearing a blue patterned sweater over a white collared shirt, is painting a portrait of a man with a bird on his head. The portrait is on a canvas that is partially covered by a pink sheet at the top. The background is a wooden door. A metal chair is in the foreground.

IVAS

THE WORKSHOP OF THE ARTIST



THE FA



CTORY

THE WORKSHOP OF THE ARTIST



THE



CITY

THE WORKSHOP OF THE ARTIST



THE S

A woman with dark hair, looking to her left, is the central figure. She is wearing a necklace made of silver chains and a green rose stem with leaves. She has red rose petals on her chest and a Polaroid photo pinned to her chest. She is holding several other Polaroid photos in her hands. In the background, several other people are visible, some looking at the woman. The setting appears to be an indoor space with a doorway in the background.

SOUL

THE WORKSHOP OF THE ARTIST

A woman with dark hair, wearing a vibrant red, long-sleeved, floor-length dress, is seated on a simple wooden chair. She is looking towards the right of the frame with a slight smile. The setting is a minimalist room with a light gray wall and floor. In the background, several people are standing and talking, some in dark clothing. A clear plastic water bottle sits on the floor next to the chair. The text 'IS THE WORKSHO', 'JUST THE INTERA', and 'PUB' is overlaid in large, white, bold, sans-serif font across the middle of the image.

IS THE WORKSHO
JUST THE INTERA
PUB

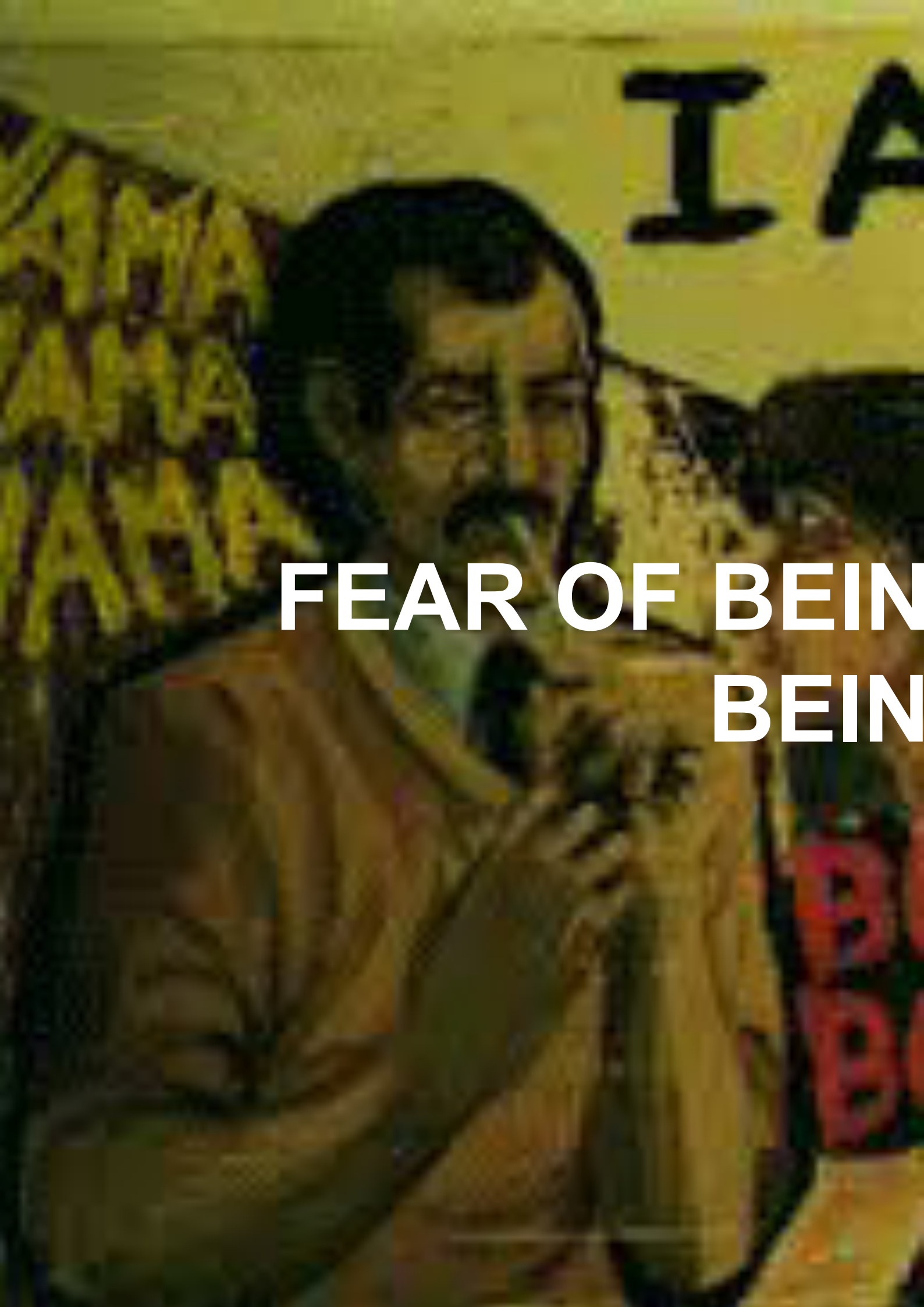


**OP OF THE ARTIST
ACTION WITH THE
LIC?**





**Ideas are
getting born in
the corridors**



**FEAR OF BEING
BEING**

AM A CLICHE
(REPEAT)

G REPETITIVE
G USUAL

WEDDOW
WEDDOW BOM
BORING DOM



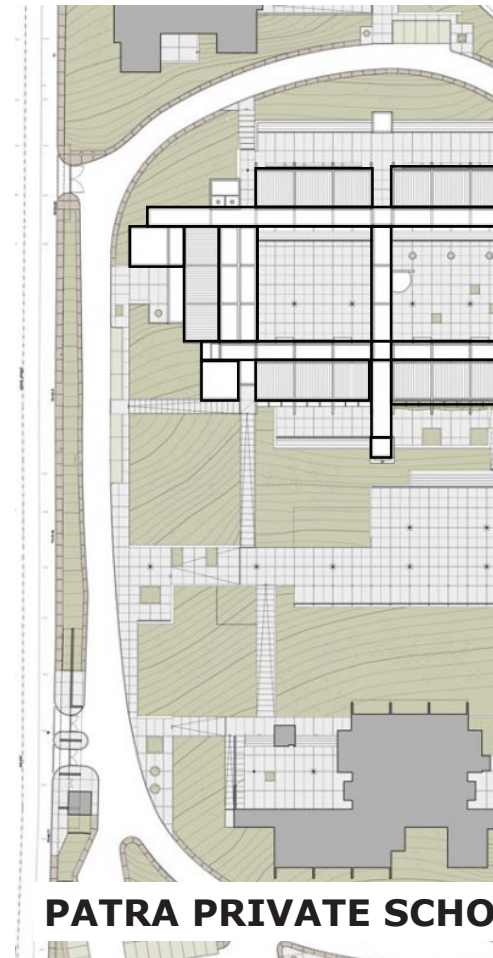


05

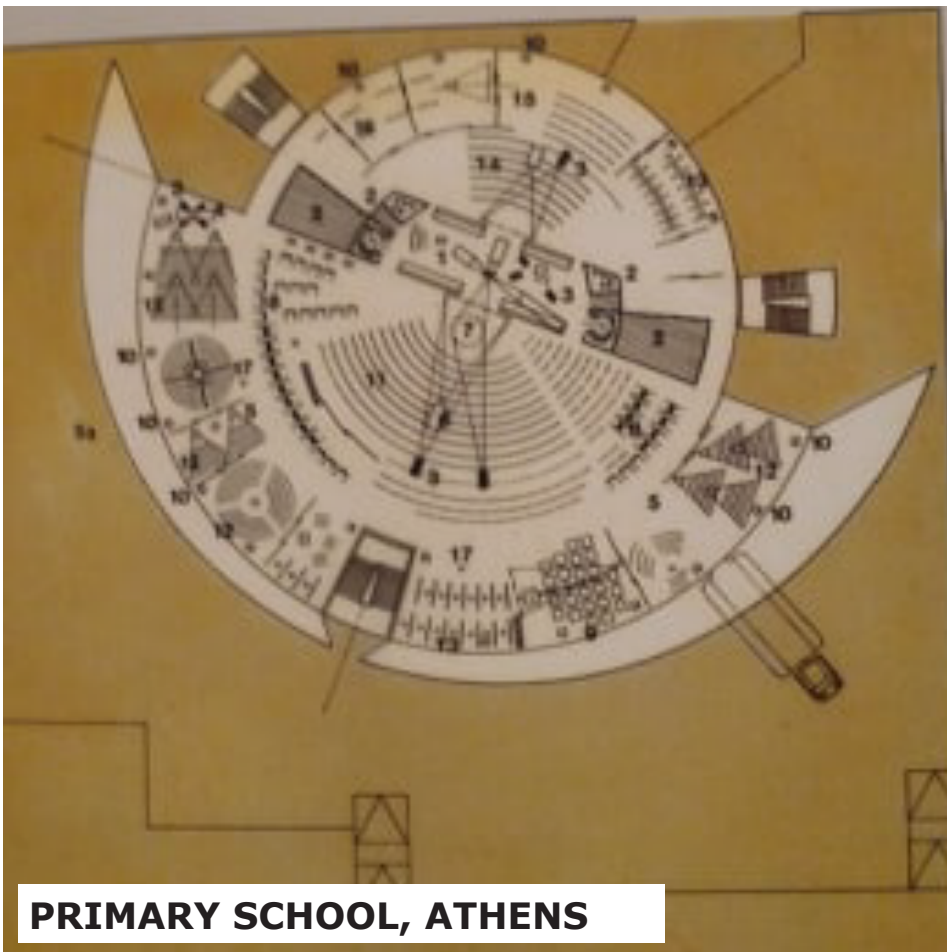
PROGRAMMATIC SPATIAL



NTUA ATHENS



PATRA PRIVATE SCHOOL

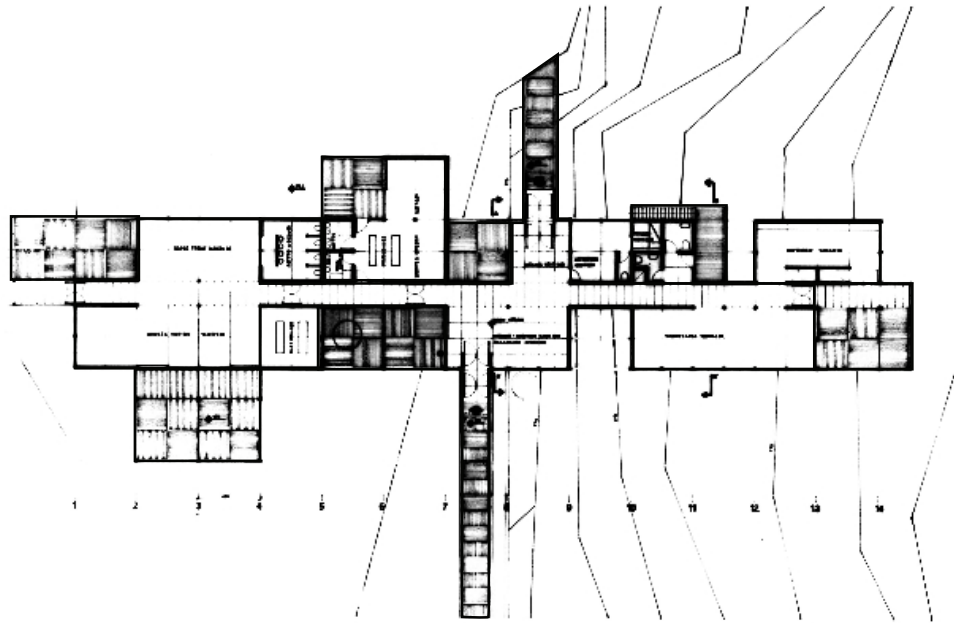
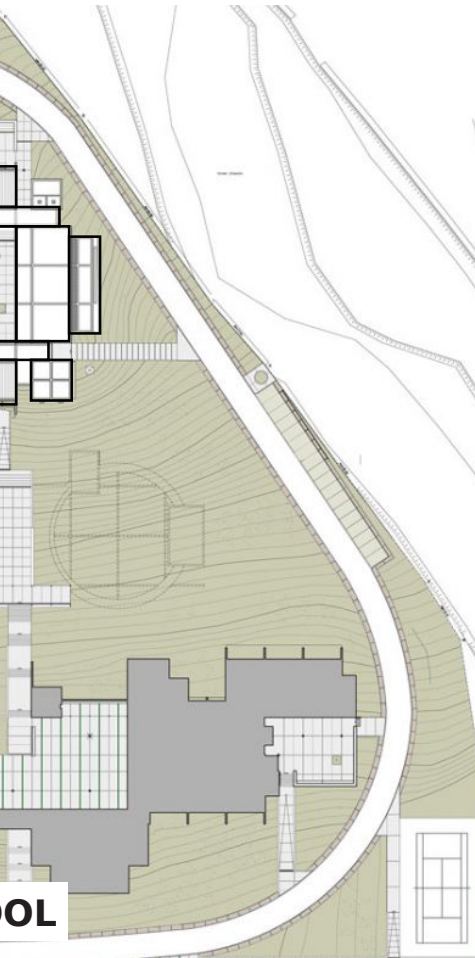


PRIMARY SCHOOL, ATHENS

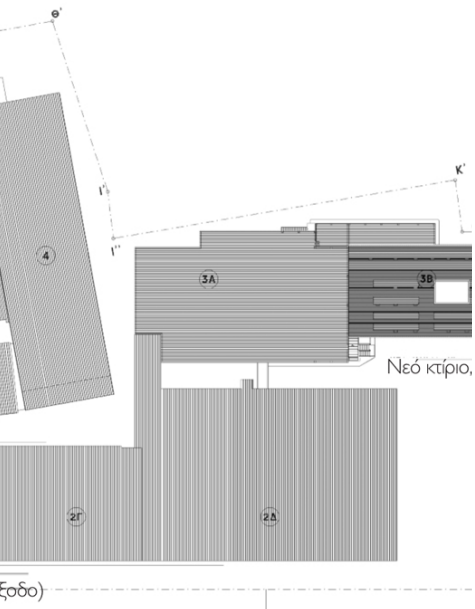


ΑΤΟΜΗ ΔΩΜΑΤΩΝ ΣΥΓΚΡΟΤΗΜΑΤΟΣ

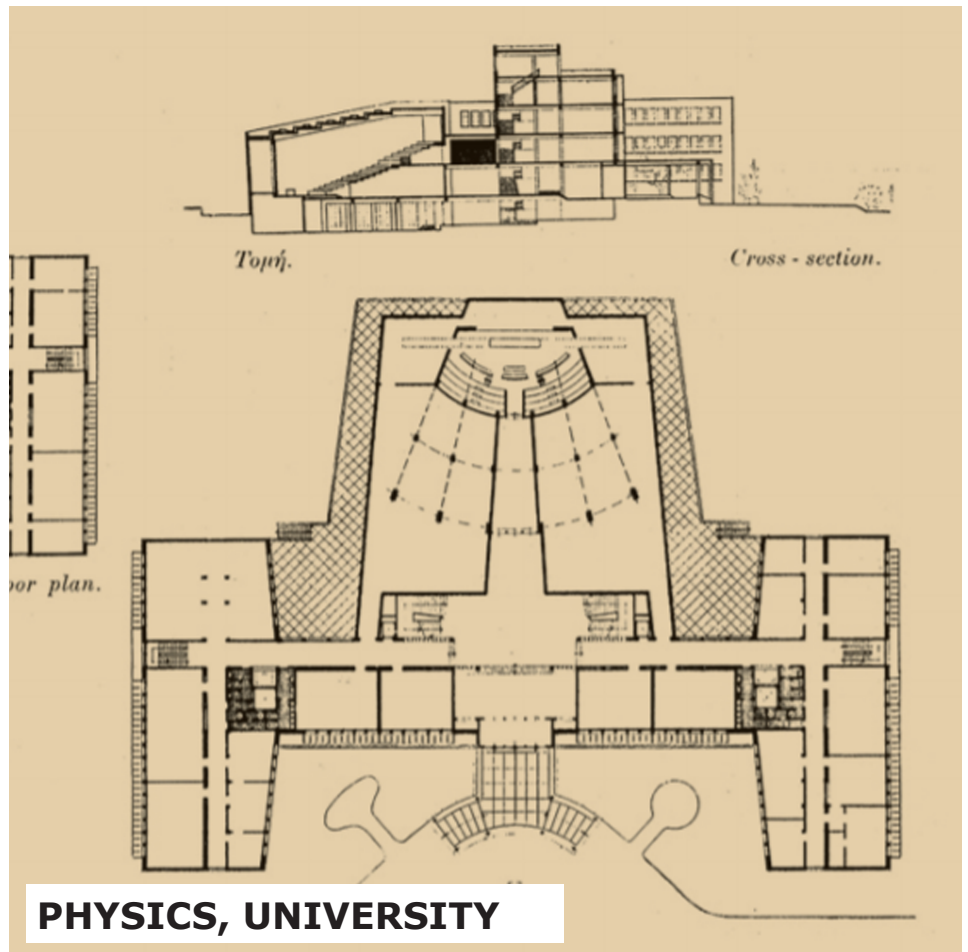
SCHOOL OF FINE ARTS



POLYTECHNIC UNIVERSITY, ATHENS

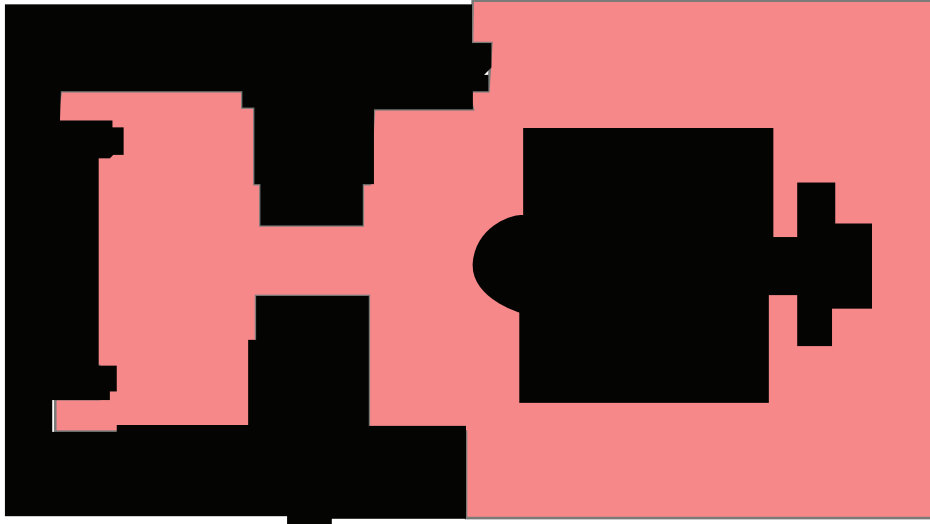


S, ATHENS

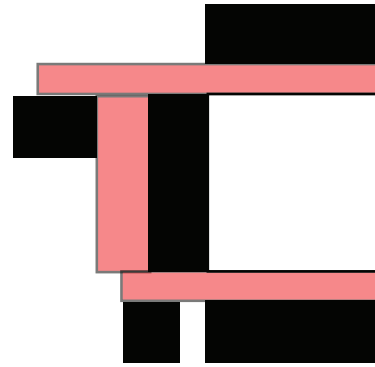


PHYSICS, UNIVERSITY

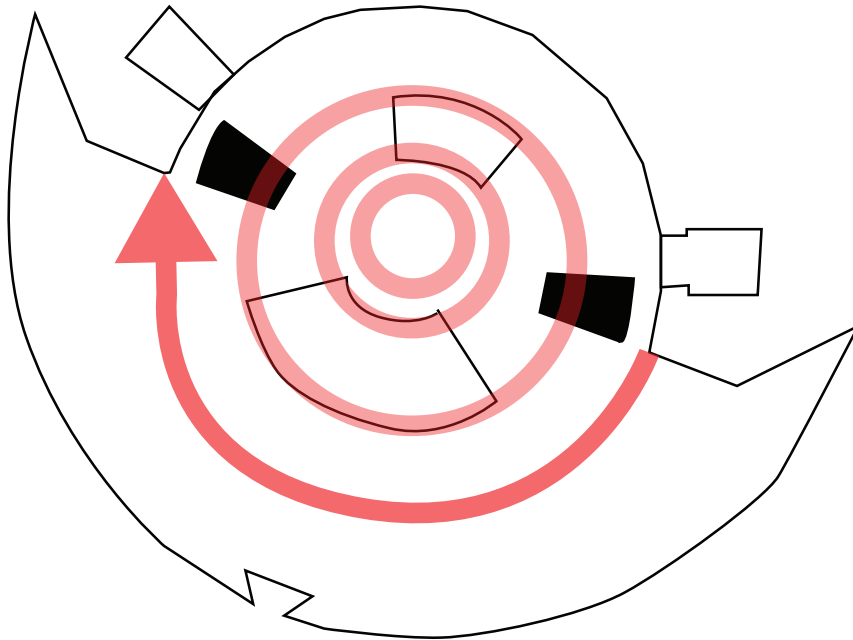
GREEK UNIVERSITIES



COURTYARD



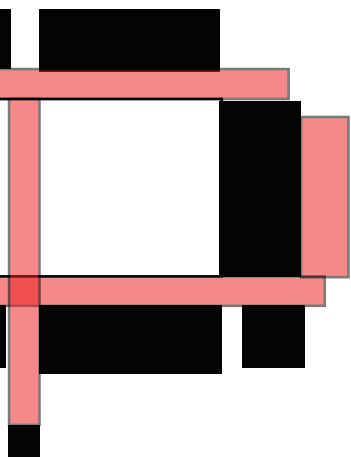
RING OF EXTERIOR



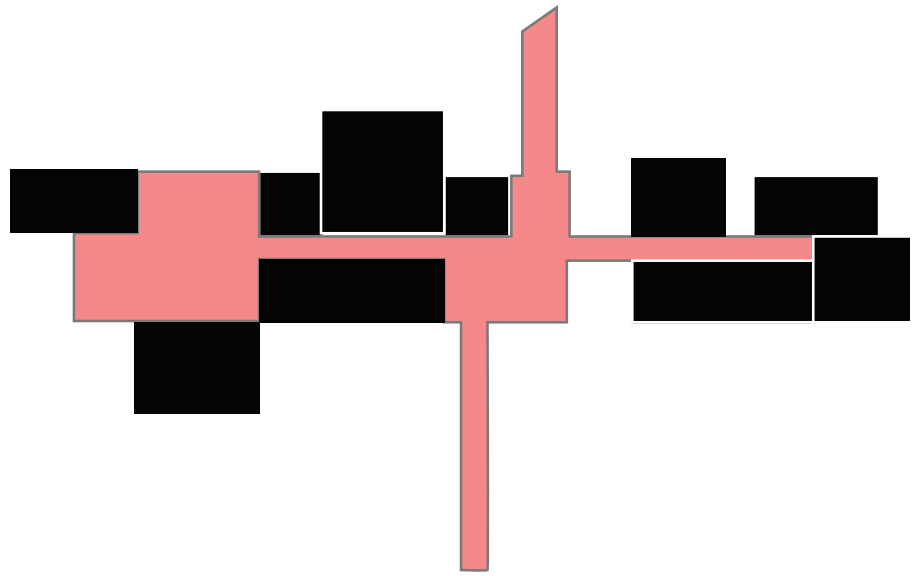
**CIRCULAR COMPOSITION_
THE AMFITHEATER AS CORE**



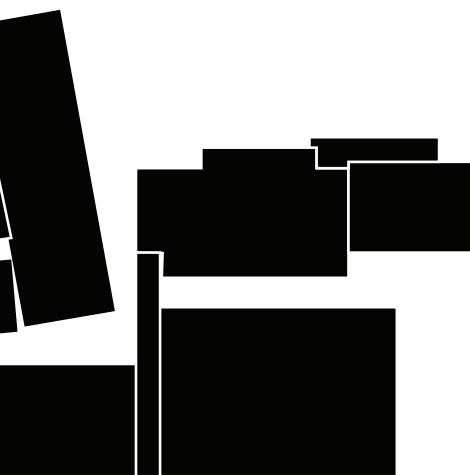
URBAN VILLAGE



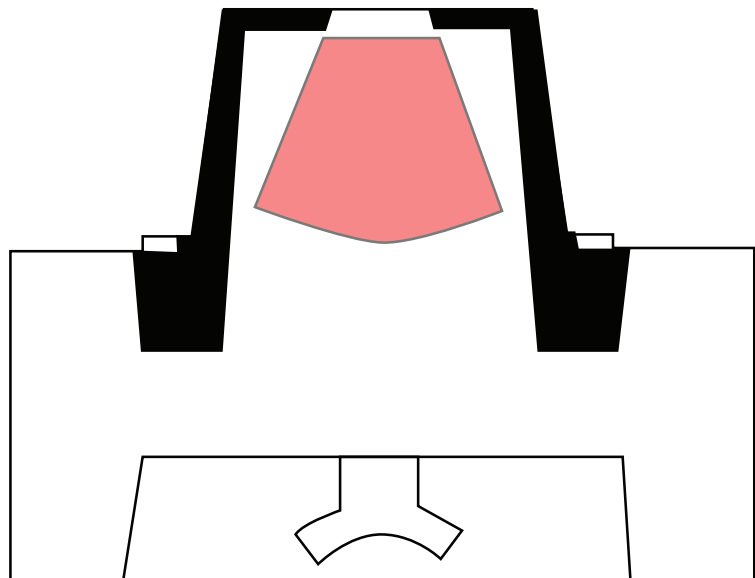
CIRCULATION



NETWORK



SYMMETRY



GREEK UNIVERSITIES





BAUHAUS

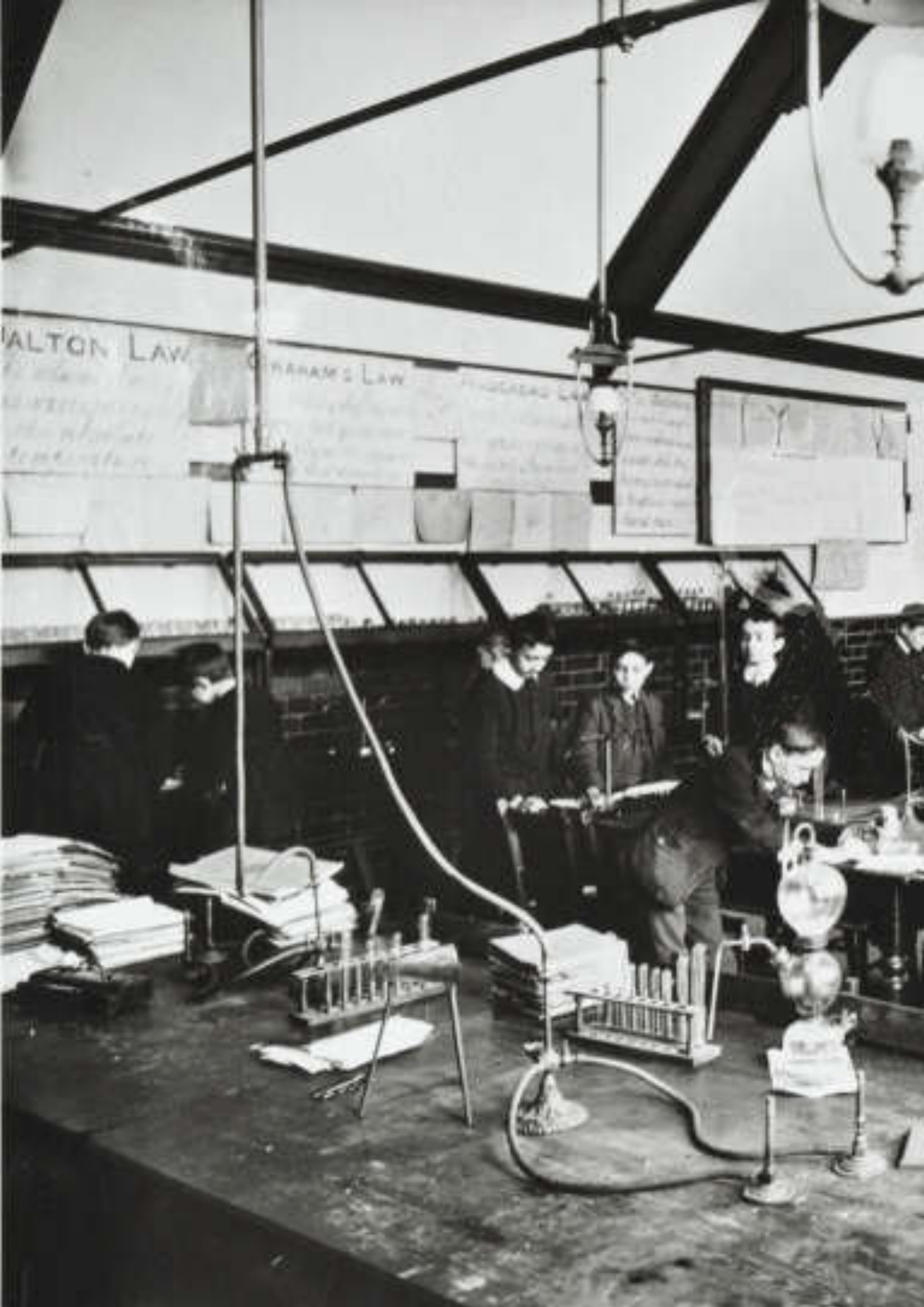












WALTON LAW

GRAHAM'S LAW

TYNDALL

TYNDALL



Acios

Do THE RIGHT

YEW



Bauhauswerkstatt Dornburg um 1920











